

WAAS CH <b>93944</b> <b>W28A</b>	APP CRS <b>277°</b>	Rwy Ldg TDZE Apt Elev	<b>3499</b> <b>777</b> <b>777</b>
--	------------------------	-----------------------------	---

# RNAV (GPS) RWY 28

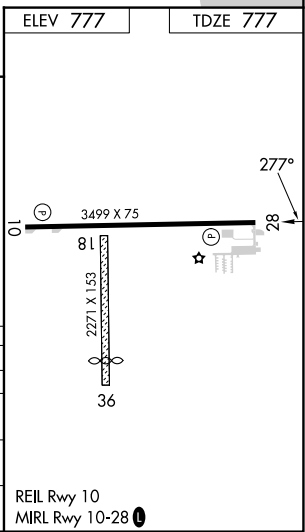
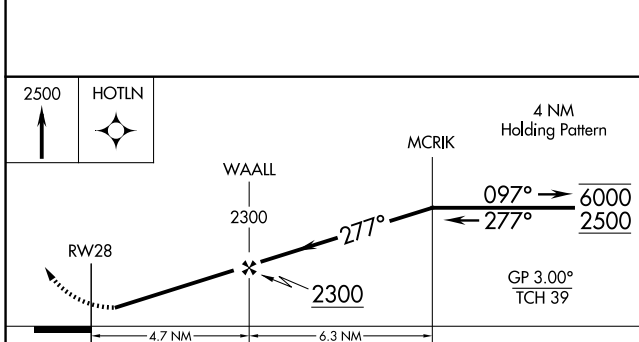
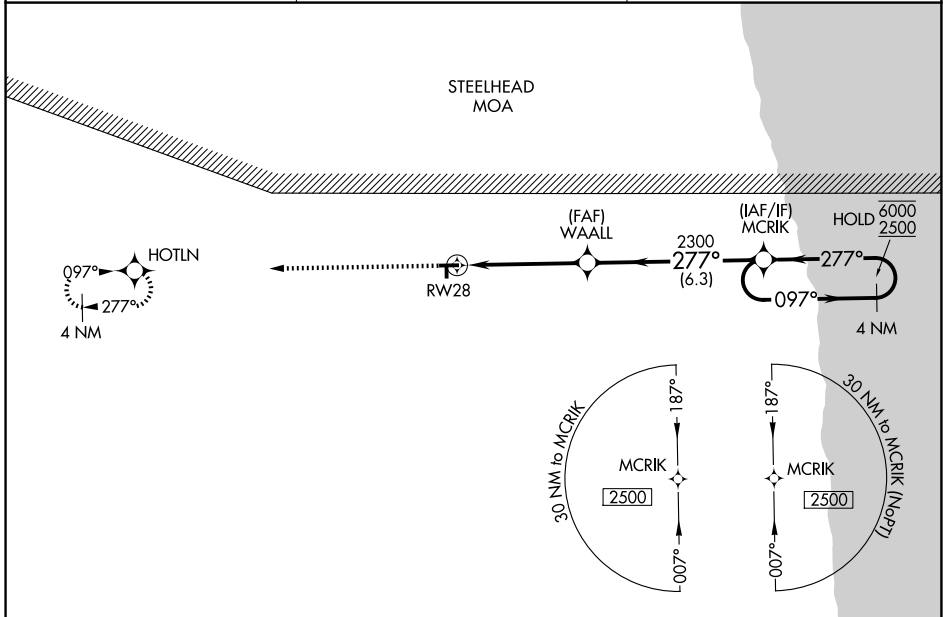
SANDUSKY CITY (Y83)

RNP APCH - GPS.

**⚠** Circling NA to Rws 18 and 36. Circling NA north of Rwy 10-28. Procedure NA at night.  
**⚠** Rwy 28 helicopter visibility reduction below 1 SM NA. Baro-VNAV NA. Use Bad Axe altimeter setting.

MISSED APPROACH:  
Climb to 2500 direct  
HOTLN and hold.

BAX AWOS-3P <b>118.6</b>	CLEVELAND CENTER <b>127.7 290.425</b>	UNICOM <b>122.8 (CTAF) 0</b>
-----------------------------	--	---------------------------------



CATEGORY	A	B	C	D
LPV DA	1077-1	300 (300-1)		NA
LNAV/VNAV DA	1077-1	300 (300-1)		NA
LNAV MDA	1260-1	483 (500-1)	1260-1 <sup>3</sup> / <sub>8</sub> 483 (500-1 <sup>3</sup> / <sub>8</sub> )	NA
CIRCLING	1260-1 483 (500-1)	1340-1 563 (600-1)	1680-2 <sup>3</sup> / <sub>4</sub> 903 (1000-2 <sup>3</sup> / <sub>4</sub> )	NA

EC-1, 16 APR 2026 to 14 MAY 2026

EC-1, 16 APR 2026 to 14 MAY 2026