

WAAS CH 62842 W28A	APP CRS 284°	Rwy Ldg 5728 TDZE 5933 Apt Elev 5933
--	------------------------	---

RNAV (GPS) RWY 28

BEAR LAKE COUNTY (1U7)

RNP APCH - GPS.

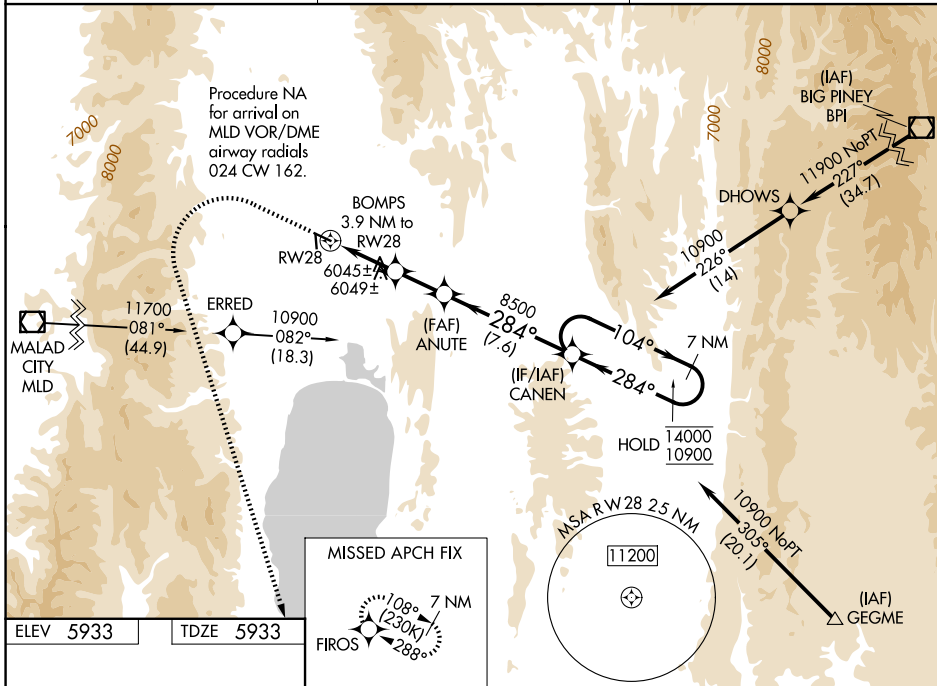
For uncompensated Baro-VNAV systems, LNAV/VNAV NA below -26°C or above 35°C.

MISSED APPROACH: (Do not exceed 185K until FIROS)
Climb to 6560 then climbing left turn to 11000 direct FIROS and hold.

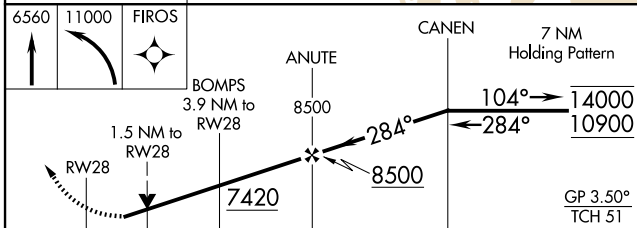
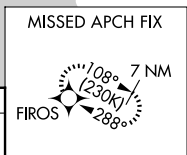
AWOS-3
118.525

SALT LAKE CENTER
127.7 354.125

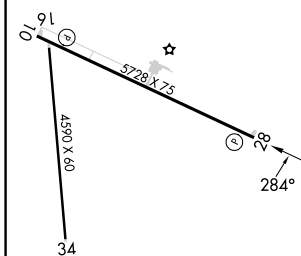
UNICOM
122.8 (CTAF)



ELEV 5933	TDZE 5933
-----------	-----------



CATEGORY	A	B	C	D
LPV DA	6305-1		372 (400-1)	
LNAV/VNAV DA	6366-1¼		433 (500-1¼)	
LNAV MDA	6560-1 627 (700-1)		6560-1¾ 627 (700-1¾)	
CIRCLING	6560-1 627 (700-1)		6720-2¼ 787 (800-2¼) 7140-3 1207 (1300-3)	



MIRL Rwy 10-28
REIL Rwy 10 and 28