

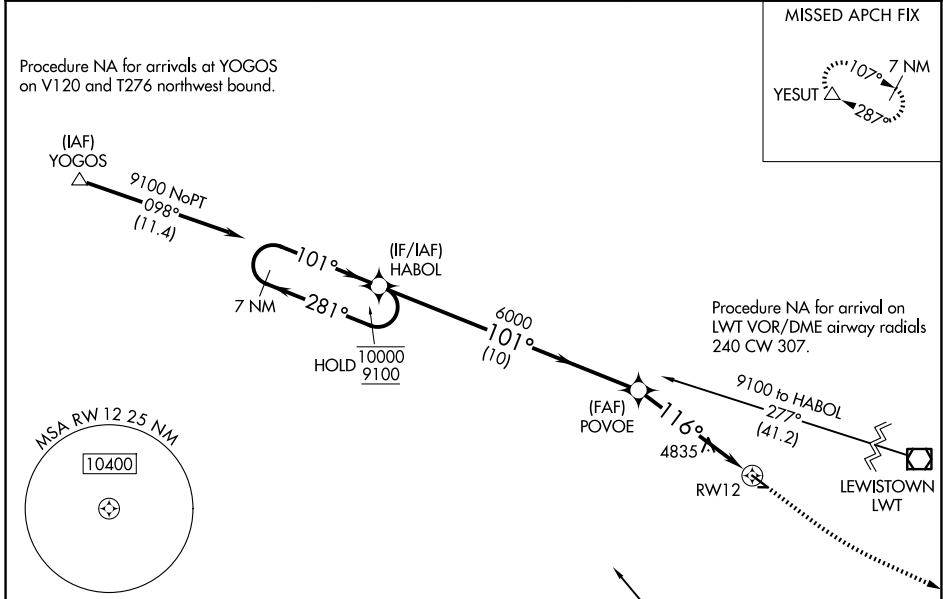
APP CRS <b>116°</b>	Rwy Ldg <b>4200</b>
	TDZE <b>4325</b>
	Apt Elev <b>4328</b>

# RNAV (GPS) RWY 12

STANFORD/BIGGERSTAFF FLD (S64)

RNP APCH - GPS.		MISSED APPROACH: Climb to 5200 then climbing left turn to 8000 direct YESUT and hold.
<p><b>▽</b> Rwy 12 helicopter visibility reduction below 3/4 SM NA. Circling NA to Rwy 7 and 25. Use LWT altimeter setting; when not received, use 19MT altimeter setting and increase all MDAs 60 feet and LNAV visibility Cat A 1/4 SM, and Circling visibility Cat B 1/4 SM. Procedure NA at night.</p> <p><b>△</b> NA</p>		

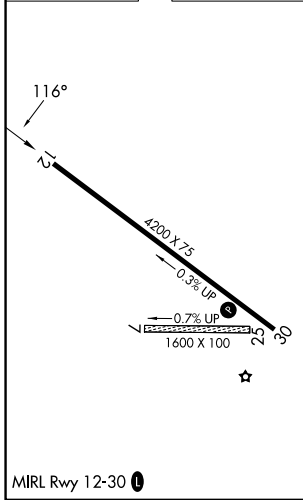
LWT ASOS <b>118.375</b>	SALT LAKE CENTER <b>133.4 285.4</b>	UNICOM <b>122.8 (CTAF) 0</b>
----------------------------	--	---------------------------------



NW-1, 16 APR 2026 to 14 MAY 2026

NW-1, 16 APR 2026 to 14 MAY 2026

ELEV 4328	TDZE 4325
-----------	-----------



7 NM Holding Pattern		HABOL		5200	8000	YESUT
10000	9100	← 281°	→ 101°	↑	↻	△
		101°	101°	POVOE	3.00°	TCH 55
		6000	116°	→	↻	RWY 12
		10 NM		5.1 NM		
CATEGORY	A	B	C	D		
LNAV MDA	5200-1 875 (900-1)	5200-1¼ 875 (900-1¼)	5200-2½	875 (900-2½)		
CIRCLING	5200-1¼ 872 (900-1¼)	5240-1¼ 912 (1000-1¼)	5600-3 1272 (1800-3)	5880-3 1552 (1600-3)		