

WAAS CH 86947 W30A	APP CRS 296°	Rwy Ldg 4200 TDZE 4321 Apt Elev 4328
--	------------------------	---

RNAV (GPS) RWY 30

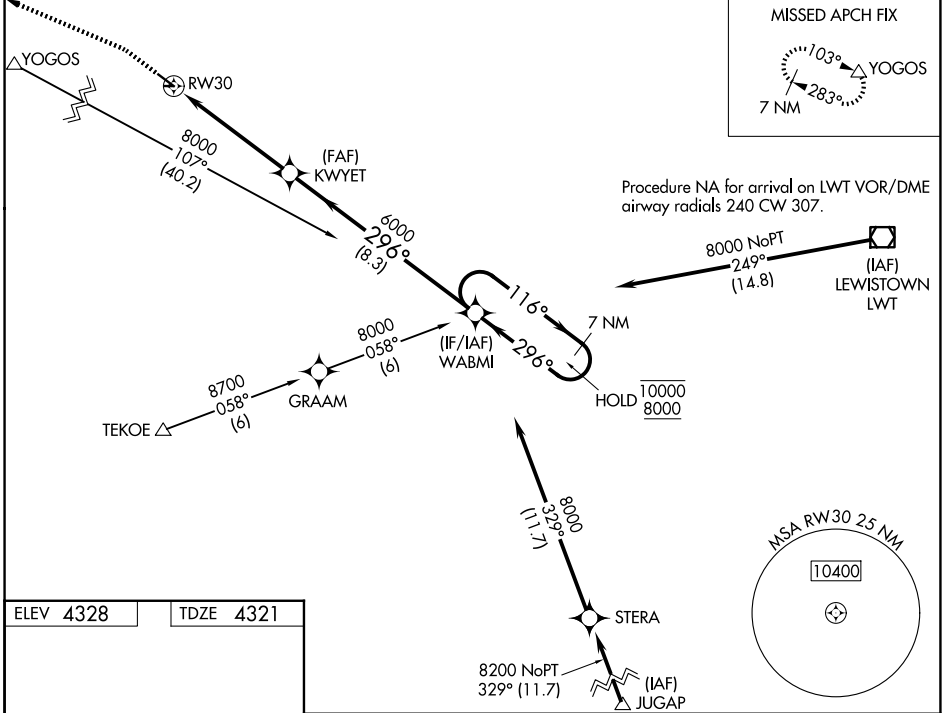
STANFORD/BIGGERSTAFF FLD (S64)

RNP APCH - GPS.

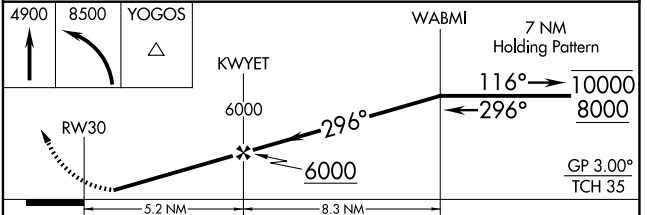
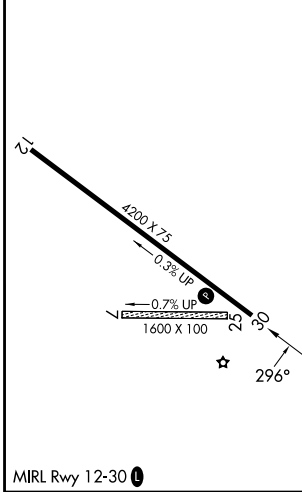
NA Baro-VNAV NA. Rwy 30 helicopter visibility reduction below 1 SM NA. Circling NA to Rwys 7 and 25. Use LWT altimeter setting; when not received, use 19MT altimeter setting and increase LPV DA to 4718 feet and all visibilities 1/8 SM. Increase LNAV/VNAV DA to 4794 feet and all visibilities 1/8 SM. Increase all MDAs 60 feet and LNAV visibility Cat B 1/2 SM, and Circling visibility Cat B 1/2 SM. Procedure NA at night.

MISSED APPROACH: Climb to 4900 then climbing left turn to 8500 direct YOGOS and hold.

LWT ASOS 118.375	SALT LAKE CENTER 133.4 285.4	UNICOM 122.8 (CTAF)
----------------------------	--	-------------------------------



ELEV 4328	TDZE 4321
-----------	-----------



CATEGORY	A	B	C	D
LPV DA	4667-1		346 (400-1)	
LNAV/VNAV DA	4743-1 1/4		422 (500-1 1/4)	
LNAV MDA	5020-1	699 (700-1)	5020-2	699 (700-2)
CIRCLING	5020-1 692 (700-1)	5240-1 1/4 912 (1000-1 1/4)	5600-3 1272 (1300-3)	5880-3 1552 (1600-3)

NW-1, 16 APR 2026 to 14 MAY 2026

NW-1, 16 APR 2026 to 14 MAY 2026