

WAAS CH 61036 W17A	APP CRS 175°	Rwy Ldg TDZE 1731 Apt Elev 1733
--	------------------------	---

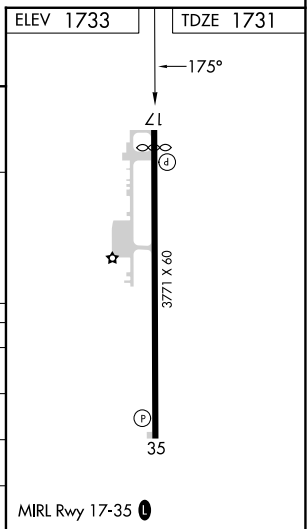
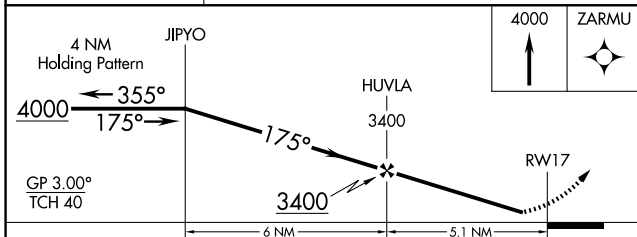
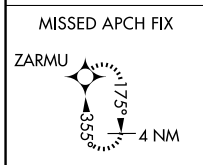
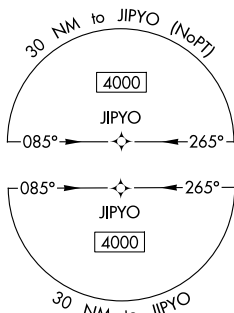
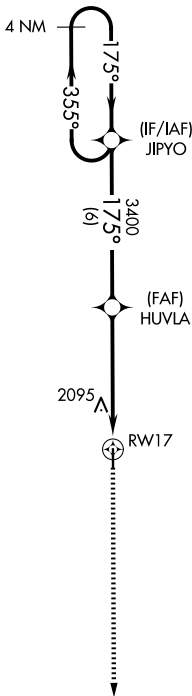
RNAV (GPS) RWY 17

THOMAS MUNI (104)

Baro-VNAV NA. Use Weatherford altimeter setting; when not received, use Clinton Rgnl altimeter setting. DME/DME RNP-0.3 NA. Night landing: Rwy 17 operational VGSI required, remain on or above VGSI glidepath until threshold. Helicopter visibility reduction below 1 SM NA.

MISSED APPROACH: Climb to 4000 direct ZARMU and hold.

OJA AWOS-3 118.575	FORT WORTH CENTER 128.4 269.37	CTAF 122.9 0
------------------------------	--	------------------------



CATEGORY	A	B	C	D
LPV DA	2033-1	302 (300-1)		NA
LNAV/VNAV DA	2480-3	749 (800-3)		NA
LNAV MDA	2400-1	669 (700-1)		NA
CIRCLING	2400-1 667 (700-1)	2460-1 727 (800-1)		NA

SC-1, 16 APR 2026 to 14 MAY 2026

SC-1, 16 APR 2026 to 14 MAY 2026