

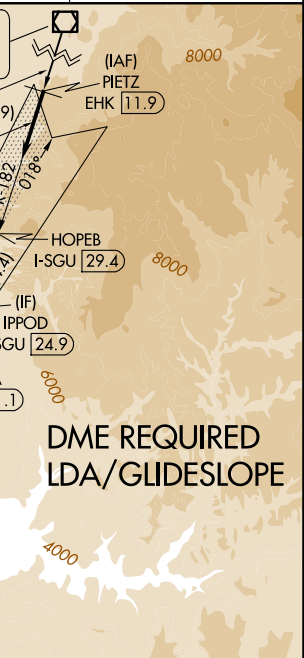
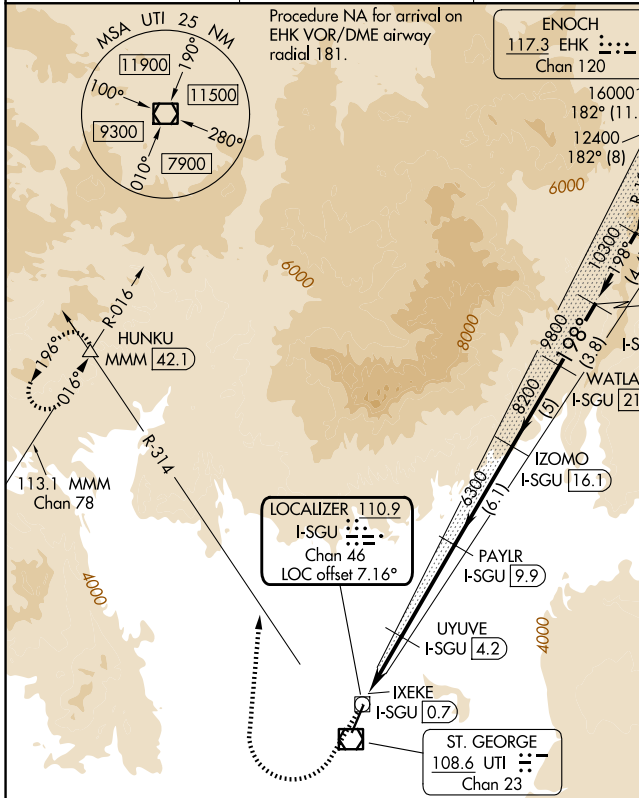
LOC/DME I-SGU 110.9 Chan 46	APP CRS 198°	Rwy Ldg TDZE Apt Elev	9300 2884 2884
--	------------------------	-----------------------------	---

LDA RWY 19

ST GEORGE RGNL (SGU)

<p>NA -5°C</p> <p>DME required. For inop ALS, increase S-LDA/GS 19 all Cats visibility to 7/8 SM.</p>	<p>MALS</p>	<p>MISSED APPROACH: Climb to 4200 then climbing right turn to 9800 on heading 354° and UTI VOR/DME R-314 to HUNKU INT/ MMM 42.1 DME and hold, continue climb-in-hold to 9800.</p>
--	--------------------	--

AWOS-3PT 135.075	LOS ANGELES CENTER 124.2 343.6	CLNC DEL 133.3	UNICOM 123.075 (CTAF)
----------------------------	--	--------------------------	---------------------------------



4200	9800	UTI R-314	HUNKU	Use I-SGU DME when on the localizer course.	IPPOD I-SGU 24.9
*LDA only.		UYUVE I-SGU 4.2	PAYLR I-SGU 9.9	IZOMO I-SGU 16.1	WATLA I-SGU 21.1
IXEKE I-SGU 0.7		4300*		6300	198° 10300
0.7		2.3 NM	1.2 NM	5.7 NM	6.1 NM
		LOC unusable inside 0.7 DME.		5 NM	3.8 NM

ELEV 2884	D	TDZE 2884
-----------	----------	-----------

CATEGORY	A	B	C	D
S-LDA/GS 19	3170-1/2		286 (300-1/2)	
S-LDA 19	3940-3/4 1056 (1100-3/4)	3940-1 1056 (1100-1)	3940-2 1/2	1056 (1100-2 1/2)
CIRCLING	3940-1 1/4 1056 (1100-1 1/4)	3940-1 1/2 1056 (1100-1 1/2)	3940-3 1056 (1100-3)	4660-3 1776 (1800-3)

SW-4, 16 APR 2026 to 14 MAY 2026

SW-4, 16 APR 2026 to 14 MAY 2026