

WAAS CH <b>50220</b> <b>W01A</b>	APP CRS <b>008°</b>	Rwy Ldg TDZE Apt Elev	<b>9300</b> <b>2851</b> <b>2884</b>
--	------------------------	-----------------------------	---

# RNAV (GPS) RWY 1

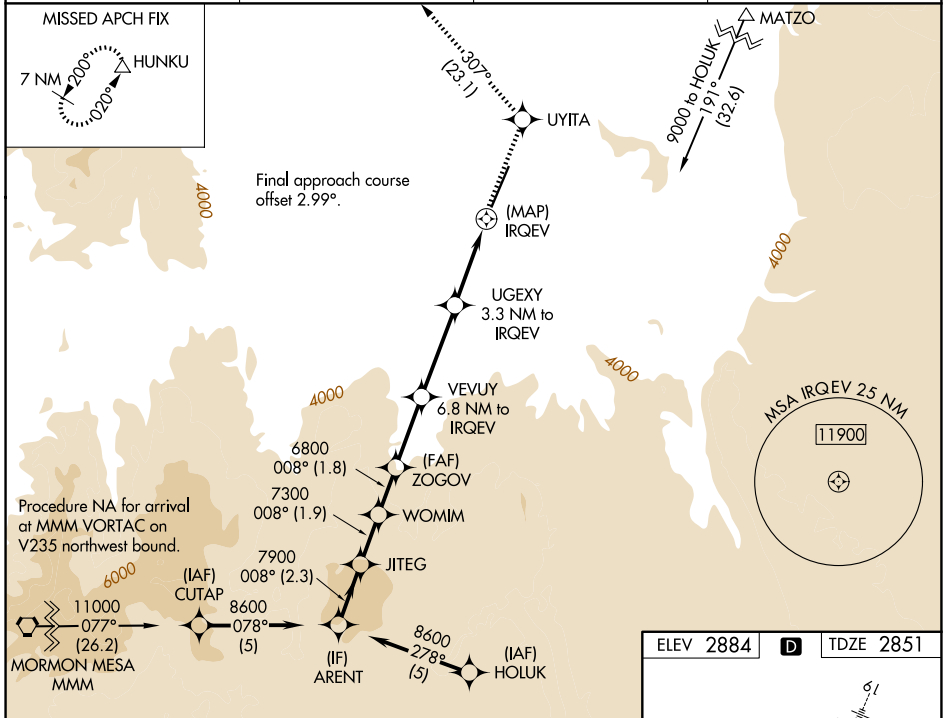
ST GEORGE RGNL (SGU)

RNP APCH-GPS

- ▼ Helicopter visibility reduction below 1 SM NA.
- ▲ # Missed approach requires a minimum climb of 225 feet per NM to 6800.
- ⊕ -5°C † Missed approach requires a minimum climb of 220 feet per NM to 6700.

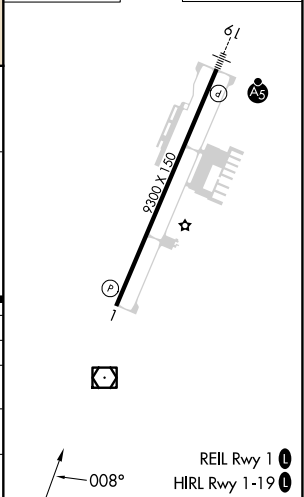
MISSED APPROACH: Climb to 9800 direct UYITA and on track 307° to HUNKU and hold, continue climb-in-hold to 9800.

AWOS-3PT <b>135.075</b>	LOS ANGELES CENTER <b>124.2 343.6</b>	CLNC DEL <b>133.3</b>	UNICOM <b>123.075</b> (CTAF) <b>1</b>
----------------------------	--	--------------------------	--



ARENT		VGS1 and RNAV glidepath not coincident (VGS1 Angle 3.00 /TCH 50).		9800	UYITA	tr	HUNKU
8600		008°		↑	◆	307°	△
7900		7300		* RNAV only.			
GP 3.60°		6800		IRQEV			
TCH 60		*5700		UGEXY 3.3 NM to IRQEV			
2.3 NM		1.9 NM		2.7 NM		3.3 NM	
A		B		C		D	
CATEGORY	A		B		C		D
LPV DA#	3170-1		319 (300-1)				NA
RNAV MDA †	3340-1		489 (500-1)		3340-1 3/8 489 (500-1 3/8)		NA
RNAV MDA	3760-1 1/4		909 (900-1 1/4)		3760-2 1/2 909 (900-2 1/2)		NA
CIRCLING	3760-1 1/4 876 (900-1 1/4)		3800-1 1/4 916 (1000-1 1/4)		3860-3 976 (1000-3)		NA

ELEV 2884	<b>D</b>	TDZE 2851
-----------	----------	-----------



SW-4, 16 APR 2026 to 14 MAY 2026

SW-4, 16 APR 2026 to 14 MAY 2026