

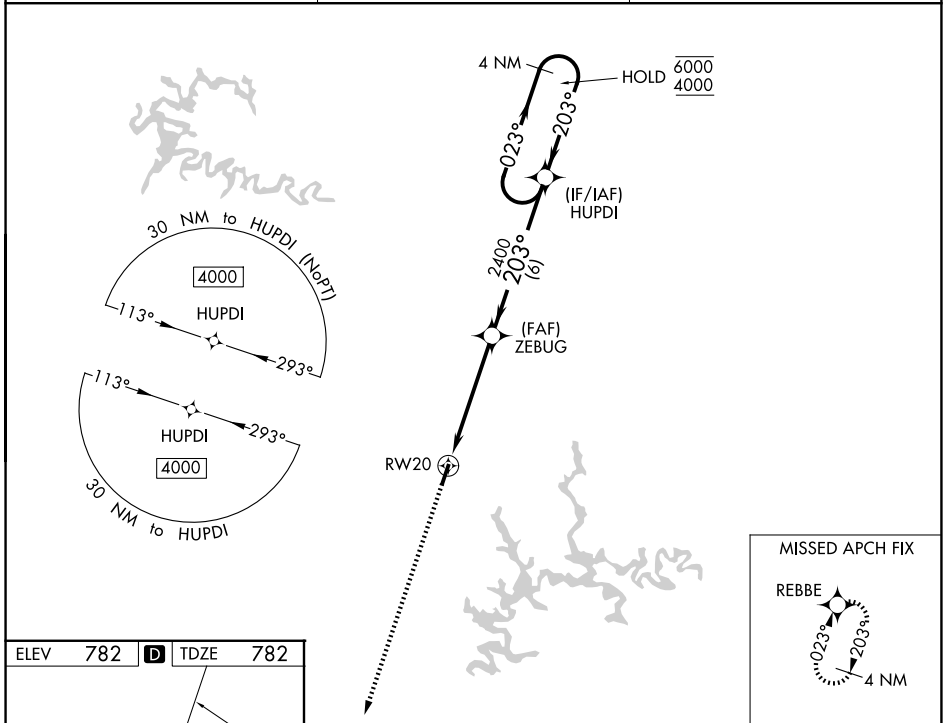
WAAS CH 72942 W20A	APP CRS 203°	Rwy Ldg 4000 TDZE 782 Apt Elev 782
--	------------------------	---

RNAV (GPS) RWY 20

LEITCHFIELD-GRAYSON COUNTY (M20)

RNP APCH.	<p>▼ NA Rwy 20 helicopter visibility reduction below 1 SM NA. Baro-VNAV NA. Use Elizabethtown altimeter setting. Straight-in Rwy 20 NA at night, Circling Rwy 20 NA at night.</p>	<p>MISSED APPROACH: Climb to 4000 direct REBBE and hold, continue climb-in-hold to 4000.</p>
-----------	--	--

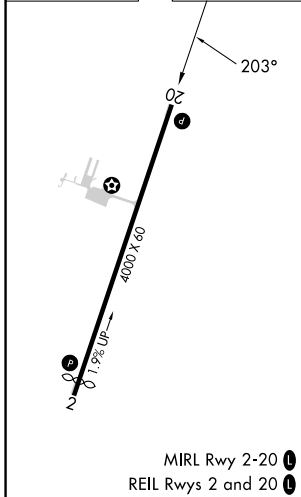
EKW AWOS-3 118.55	INDIANIAPOLIS CENTER 121.175 353.65	UNICOM 123.0 (CTAF) 0
-----------------------------	---	---------------------------------



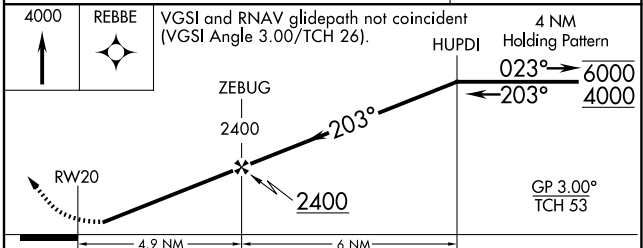
SE-1, 16 APR 2026 to 14 MAY 2026

SE-1, 16 APR 2026 to 14 MAY 2026

ELEV 782	D	TDZE 782
----------	----------	----------



MIRL Rwy 2-20 **0**
REL Rws 2 and 20 **0**



CATEGORY	A	B	C	D
LPV DA	1088-1		306 (400-1)	NA
LNAV/VNAV DA	1145-1		363 (400-1)	NA
LNAV MDA	1320-1	538 (600-1)	1320-1½ 538 (600-1½)	NA
CIRCLING	1380-1	598 (600-1)	1380-1½ 598 (600-1½)	NA