

| | | | |
|--|------------------------|-----------------------------|---|
| WAAS CH 70439 W17A | APP CRS 170° | Rwy Ldg TDZE Apt Elev | 4500 2086 2086 |
|--|------------------------|-----------------------------|---|

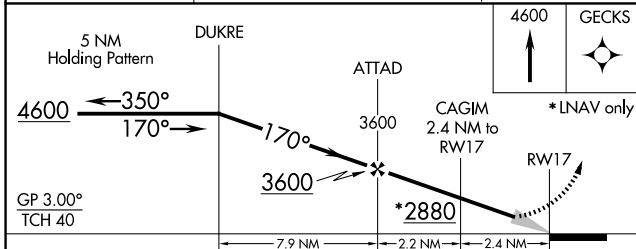
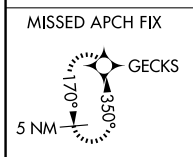
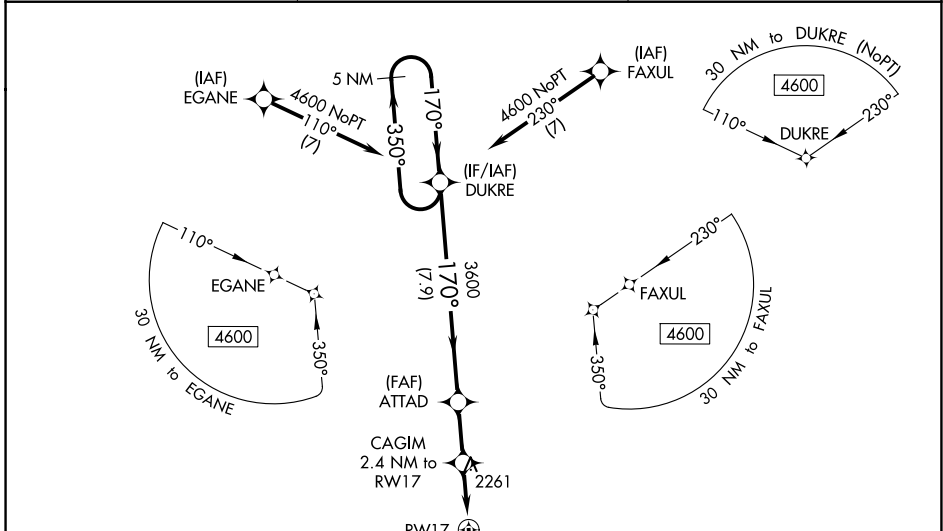
RNAV (GPS) RWY 17

COMANCHE COUNTY (3K8)

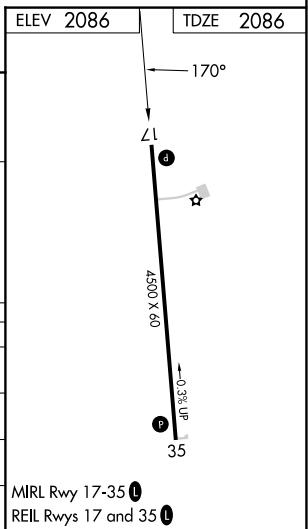
⚠ Baro-VNAV NA when using Pratt altimeter setting. DME/DME RNP-0.3 NA. When local altimeter setting not received, use Pratt altimeter setting and increase LPV and LNAV/VNAV DA to 2558; increase all MDA 120 feet; increase LPV and LNAV/VNAV all Cats visibility ¼ SM, increase LNAV Cat C visibility ¼ SM, and increase Circling Cat C visibility ½ SM.

MISSED APPROACH: Climb to 4600 direct GECKS and hold.

| | | |
|---------------------------|---|------------------------|
| AWOS-3PT 118.05 | KANSAS CITY CENTER 126.95 379.2 | CTAF 122.9 0 |
|---------------------------|---|------------------------|



| CATEGORY | A | B | C | D |
|--------------|----------------------------|-------------|-------------------------------|----|
| LPV DA | 2447-1 1/8 361 (400-1 1/8) | | | NA |
| LNAV/VNAV DA | 2447-1 1/8 361 (400-1 1/8) | | | NA |
| LNAV MDA | 2640-1 | 554 (600-1) | 2640-1 1/8 554 (600-1 1/8) | NA |
| CIRCLING | 2640-1 | 554 (600-1) | 2940-2 1/2 854 (900-2 1/2) | NA |



NC-2, 16 APR 2026 to 14 MAY 2026

NC-2, 16 APR 2026 to 14 MAY 2026