

WAAS CH 69415 W01A	APP CRS 013°	Rwy Ldg TDZE Apt Elev	8000 63 75
--	------------------------	-----------------------------	---------------------------------------

RNAV (GPS) RWY 1R

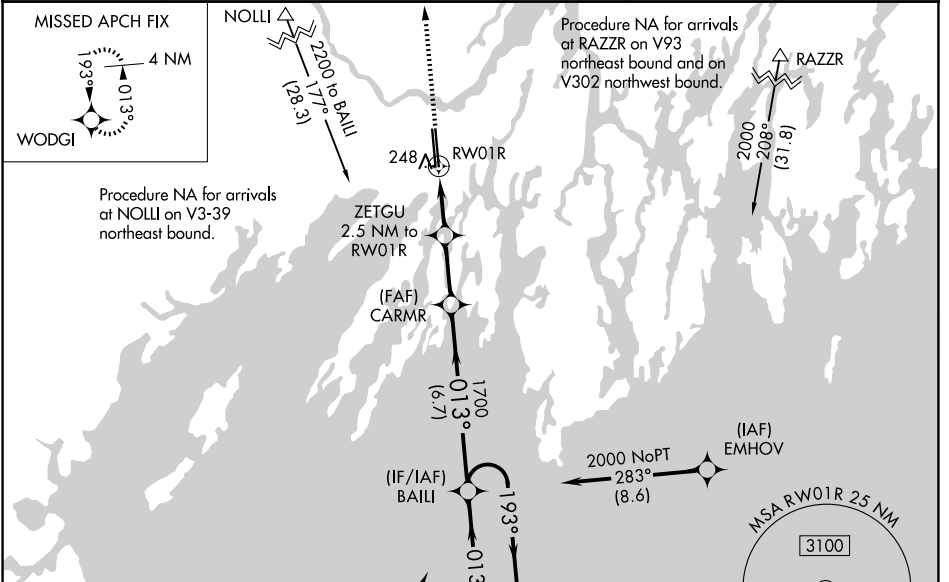
BRUNSWICK EXEC (BXM)

⚠ Baro-VNAV NA when using Portland altimeter setting. For uncompensated Baro-VNAV systems, LNAV/VNAV NA below -15°C (5°F) or above 54°C (130°F). DME/DME RNP-0.3 NA. VDP NA when using Portland altimeter setting. When local altimeter setting not received, use Portland altimeter setting and increase LPV DA to 314, LNAV/VNAV DA to 461 and all LNAV/VNAV visibilities ¼ SM; increase all MDA 60 feet and LNAV Cat C/D visibilities ¼ SM and Circling Cat C/D visibilities ¼ SM. For inop ALS when using Portland altimeter setting, increase LNAV Cat C/D visibility to 1 ½ SM.

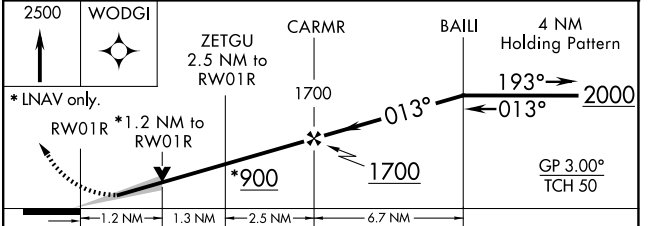
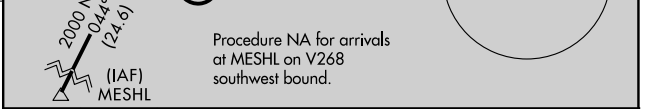
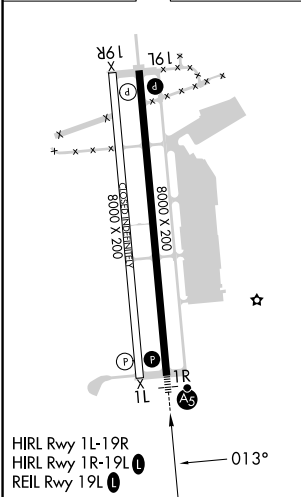


MISSED APPROACH:
Climb to 2500 direct WODGI and hold.

AWOS-3PT 134.875	PORTLAND APP CON ★ (112°-292°) 119.75 269.35 (293°-111°) 120.4 299.2	CLNC DEL 123.65	UNICOM 122.725 (CTAF) 0
----------------------------	---	---------------------------	--



ELEV 75	TDZE 63
----------------	----------------



CATEGORY	A	B	C	D
LPV DA		263-½	200 (200-½)	
LNAV/VNAV DA		410-⅝	347 (400-⅝)	
LNAV MDA	500-½	437 (500-½)	500-¾	437 (500-¾)
CIRCLING	560-1	485 (500-1)	840-2¼ 765 (800-2¼)	840-2½ 765 (800-2½)

NE-1, 16 APR 2026 to 14 MAY 2026

NE-1, 16 APR 2026 to 14 MAY 2026