

APP CRS	Rwy Ldg	<b>3049</b>
<b>176°</b>	TDZE	<b>842</b>
	Apt Elev	<b>842</b>

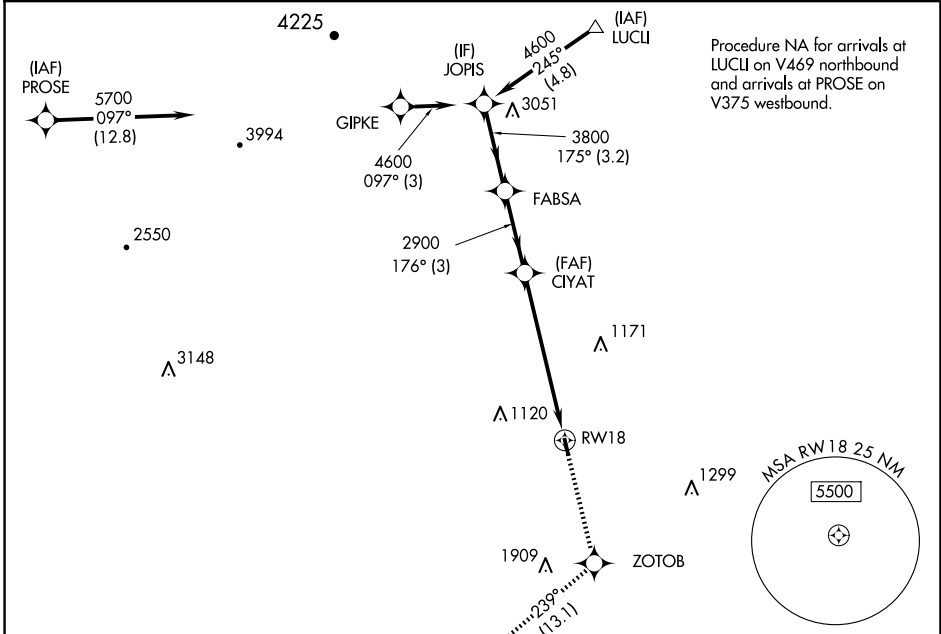
# RNAV (GPS) RWY 18

NEW LONDON (W90)

RNP APCH.  
 ▼ Rwy 18 helicopter visibility reduction below 1 SM NA. Procedure  
 ▲ NA NA at night. Use Lynchburg altimeter setting.

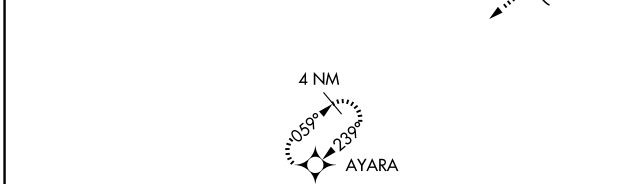
MISSED APPROACH: Climb to 4000 direct ZOTOB and on track 239° to AYARA and hold.

LYH ASOS <b>119.8</b>	ROANOKE APP CON <b>135.0 254.325</b>	UNICOM <b>122.8 (CTAF)</b>
--------------------------	---	-------------------------------



NE-3, 16 APR 2026 to 14 MAY 2026

NE-3, 16 APR 2026 to 14 MAY 2026



ELEV 842	TDZE 842
----------	----------

JOPIS	Visual Segment - Obstacles.		4000	ZOTOB	ir 239°	AYARA
4600	175°	FABSA	3800	176°	CIYAT	2900
3.2 NM			3 NM		6.2 NM	

CATEGORY	A	B	C	D
LNVA MDA	1860-3	1018 (1100-3)	NA	
CIRCLING	1860-3	1018 (1100-3)	NA	