

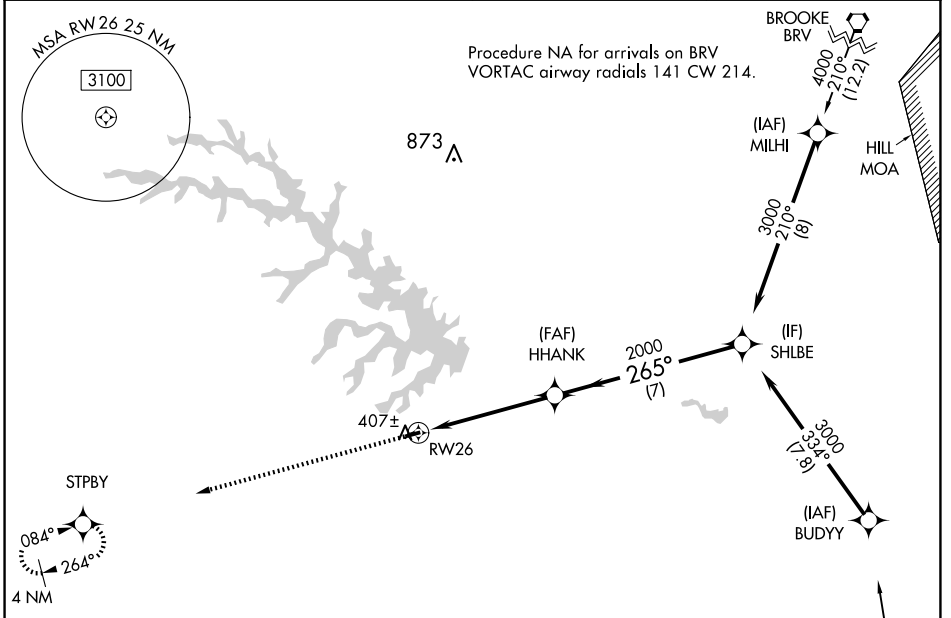
APP CRS	Rwy Idg	<b>2558</b>
<b>265°</b>	TDZE	<b>351</b>
	Apt Elev	<b>351</b>

# RNAV (GPS) RWY 26

LAKE ANNA (7W4)

RNP APCH.	Procedure NA at night. When local altimeter setting not received, use Louisa altimeter setting and increase all MDA 60 feet. Helicopter visibility reduction below 3 SM NA.	MISSED APPROACH: Climb to 3000 direct STPBY and hold.

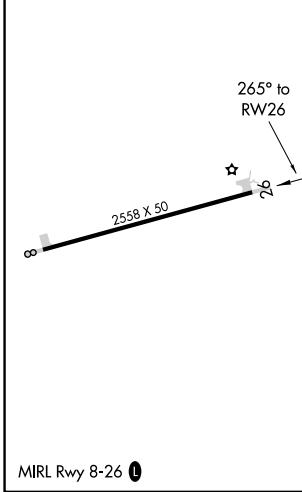
AWOS-3 <b>120.775</b>	LKU AWOS-3 <b>119.475</b>	POTOMAC APP CON <b>126.75 307.2</b>	CTAF <b>122.9</b>
--------------------------	------------------------------	--	----------------------



NE-3, 16 APR 2026 to 14 MAY 2026

NE-3, 16 APR 2026 to 14 MAY 2026

ELEV 351	TDZE 351
----------	----------



Procedure NA for arrivals on RIC VORTAC airway radials 283 CW 048.			
3000	STPBY	Visual Segment - Obstacles.	
CATEGORY	A	B	C
LNAV MDA	1360-3	1009 (1100-3)	NA
CIRCLING	1360-3	1009 (1100-3)	NA