

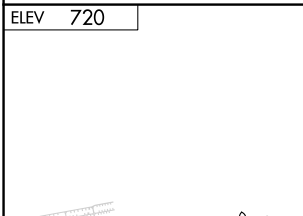
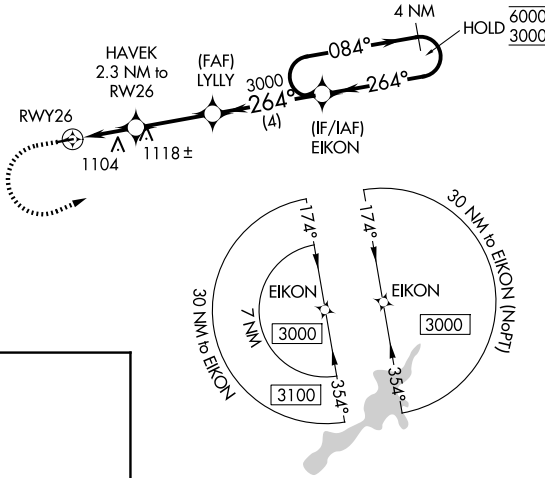
APP CRS	Rwy Ldg	N/A
<b>264°</b>	TDZE	N/A
	Apt Elev	<b>720</b>

# RNAV (GPS)-A

MORAINE AIR PARK (I73)

RNP APCH - GPS.	Procedure NA at night. Rwy 8 and 26 helicopter visibility reduction below 1 SM NA. Use Dayton-Wright Brothers altimeter setting.	MISSED APPROACH: Climb to 1500 then climbing left turn to 3000 direct EIKON and hold.
▼ ▲ NA		

MGY ASOS <b>118.375</b>	COLUMBUS APP CON <b>118.85 134.45 269.275</b>	UNICOM <b>122.7 (CTAF) 0</b>
----------------------------	--	---------------------------------



1500 3000 EIKON 4 NM Holding Pattern	RWY26 HAVEK 2.3 NM to RWY26 LYLLY EIKON 4 NM			
	1780 TCH 40 4.11°	3000 264°	6000 084°	3000 264°
CATEGORY	A	B	C	D
CIRCLING	1440-1 720 (800-1)	1520-1 800 (800-1)	NA	

MIRL Rwy 8-26 0