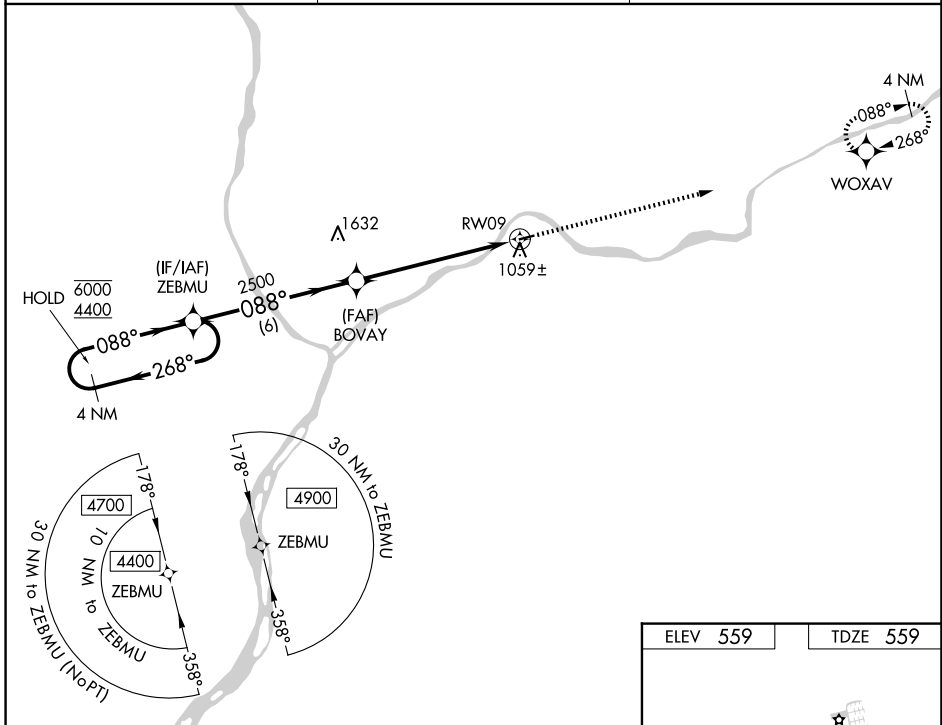


WAAS CH 65827 W09A	APP CRS 088°	Rwy Ldg TDZE Apt Elev	3000 559 559
--	------------------------	-----------------------------	---

RNAV (GPS) RWY 9

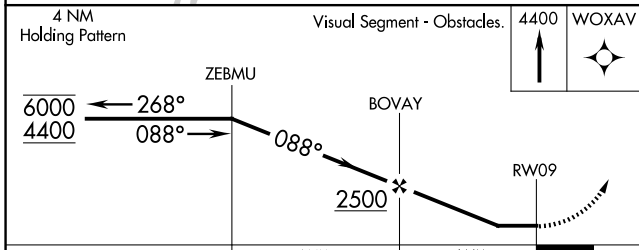
DANVILLE (8N8)

RNP APCH - GPS.		MISSED APPROACH: Climb to 4400 direct WOXAV and hold, continue climb-in-hold to 4400.
▼ Rwy 9 helicopter visibility reduction below 1 SM NA. ▲ NA Procedure NA at night. Use Williamsport altimeter setting; when not received, procedure NA.		
IPT ASOS 125.225	WILKES-BARRE APP CON 126.3 256.7	UNICOM 122.8 (CTAF) 0



NE-4, 16 APR 2026 to 14 MAY 2026

NE-4, 16 APR 2026 to 14 MAY 2026



ELEV 559	TDZE 559
----------	----------

MIRL Rwy 9-27 0

CATEGORY	A	B	C	D
LP MDA	1280-1¼ 721 (800-1¼)	1280-1½ 721 (800-1½)		NA
LNAV MDA	1360-1¼ 801 (900-1¼)	1360-1½ 801 (900-1½)		NA
CIRCLING	1480-1¼ 921 (1000-1¼)	1760-1½ 1201 (1300-1½)		NA