

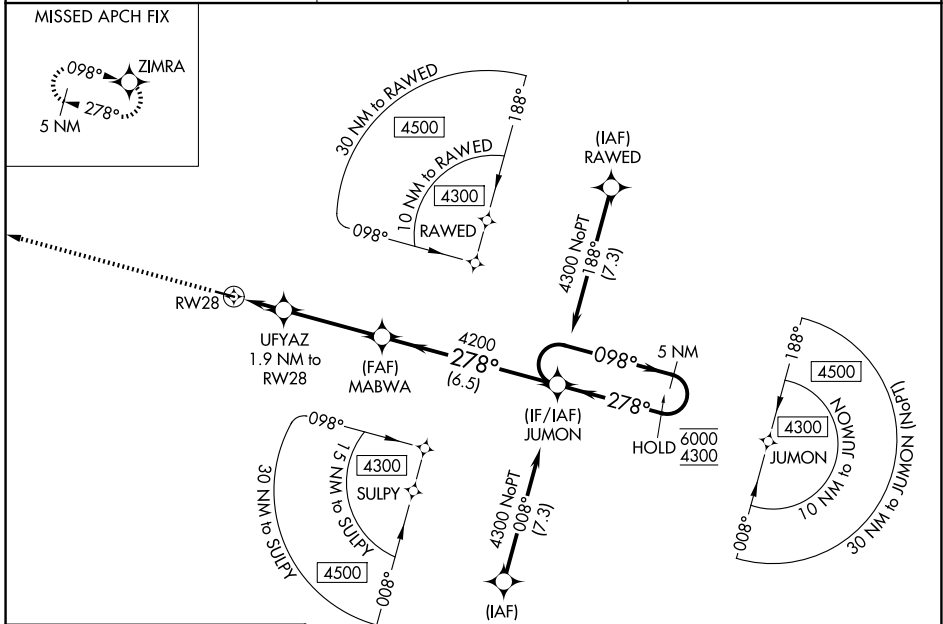
WAAS CH <b>93647</b> <b>W28A</b>	APP CRS <b>278°</b>	Rwy Ldg TDZE Apt Elev	<b>4001</b> <b>2414</b> <b>2414</b>
--	------------------------	-----------------------------	---

# RNAV (GPS) RWY 28

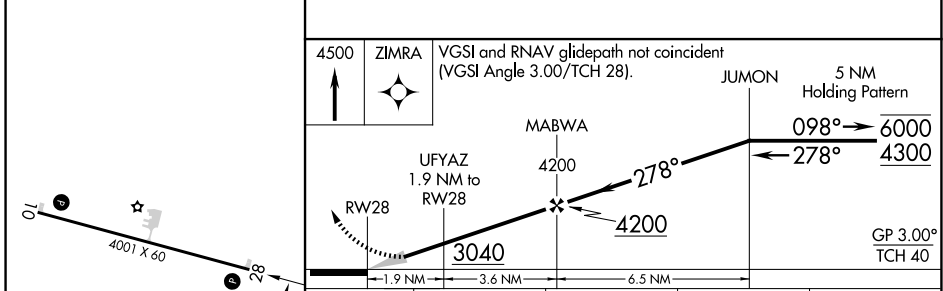
MOTT MUNI (3P3)

RNP APCH - GPS.	MISSED APPROACH: Climb to 4500 direct ZIMRA and hold.
<p>Baro-VNAV NA. Use HEI altimeter setting; when not received, use DIK altimeter setting and increase LPV DA to 2764 feet; increase LNAV/VNAV DA to 2889 feet; increase all MDAs 20 feet and Circling visibility Cat D ¼ SM.</p>	

HEI ASOS <b>119.925</b>	MINNEAPOLIS CENTER <b>124.25 236.825</b>	CTAF <b>122.9</b>
----------------------------	---	----------------------



ELEV 2414	TDZE 2414
-----------	-----------



4500	ZIMRA	VGSIs and RNAV glidepath not coincident (VGSIs Angle 3.00/TCH 28).	
↑	✦	JUMON	5 NM Holding Pattern
UFYAZ	MABWA	JUMON	6000
1.9 NM to RWY 28	4200	278°	4300
3040	4200	278°	
1.9 NM	3.6 NM	6.5 NM	
			GP 3.00° TCH 40

CATEGORY	A	B	C	D
LPV DA	2762-1 348 (400-1)			
LNAV/VNAV DA	2887-1 3/8 473 (500-1 3/8)			
LNAV MDA	2900-1	486 (500-1)	2900-1 3/8	486 (500-1 3/8)
CIRCLING	3140-1	726 (800-1)	3200-2 1/4 786 (800-2 1/4)	3280-2 3/4 866 (900-2 3/4)

MIRL Rwy 10-28

NC-1, 16 APR 2026 to 14 MAY 2026

NC-1, 16 APR 2026 to 14 MAY 2026