

APP CRS	Rwy Ldg	5000
011°	TDZE	65
	Apt Elev	65

RNAV (GPS) RWY 1

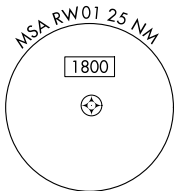
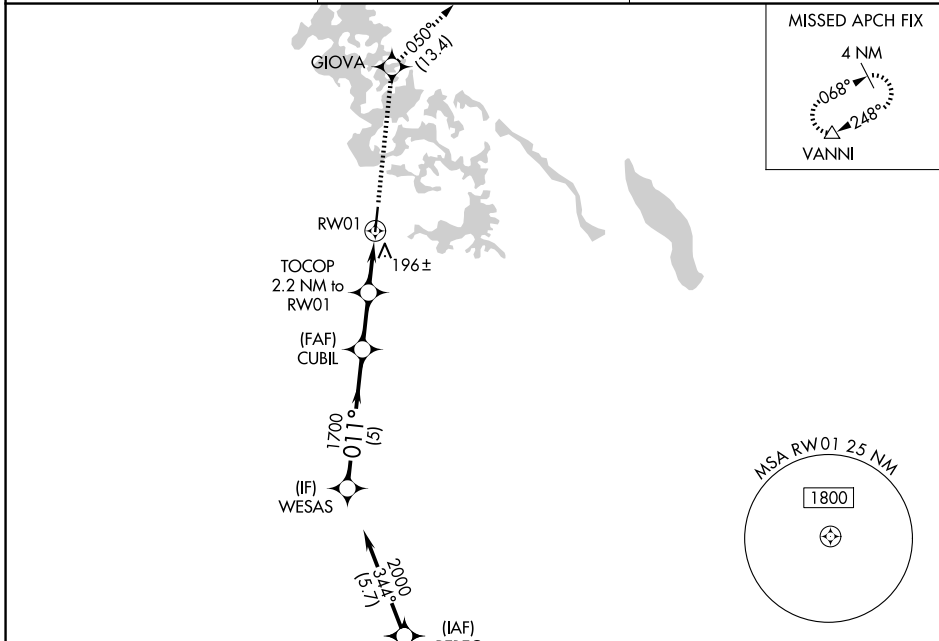
INVERNESS (INF)

RNP APCH - GPS.

▼ Rwy 1 helicopter visibility reduction below 1 SM NA. Procedure NA at night. When local altimeter setting not received, use OCF altimeter setting and increase all MDAs 60 feet and LNAV visibility Cat C 1/8 SM, and Circling visibility Cat C 1/4 SM.

MISSED APPROACH: Climb to 2000 direct GIOVA and on track 050° to VANNI and hold.

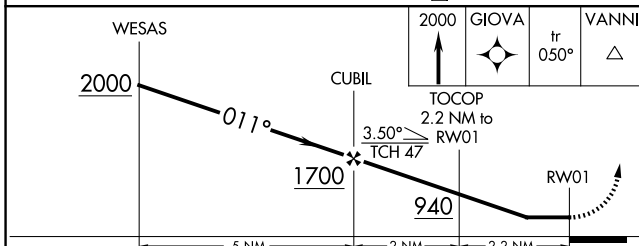
AWOS-3 119.975	JACKSONVILLE APP CON 118.6 251.15	UNICOM 122.725 (CTAF) 0
--------------------------	---	-----------------------------------



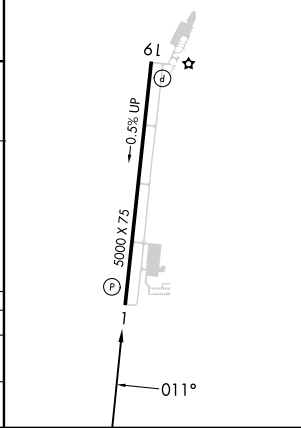
ELEV 65	TDZE 65
---------	---------

MIRL Rwy 1-19 **0**
REIL Rwys 1 and 19 **0**

Procedure NA for arrivals at DADES on V581 southbound.



CATEGORY	A	B	C	D
LNAV MDA	500-1	435 (500-1)	500-1 1/4 435 (500-1 1/4)	NA
CIRCLING	660-1	595 (600-1)	660-1 1/2 595 (600-1 1/2)	NA



SE-3, 16 APR 2026 to 14 MAY 2026

SE-3, 16 APR 2026 to 14 MAY 2026