

APP CRS	Rwy Ldg	5000
191°	TDZE	54
	Apt Elev	65

RNAV (GPS) RWY 19

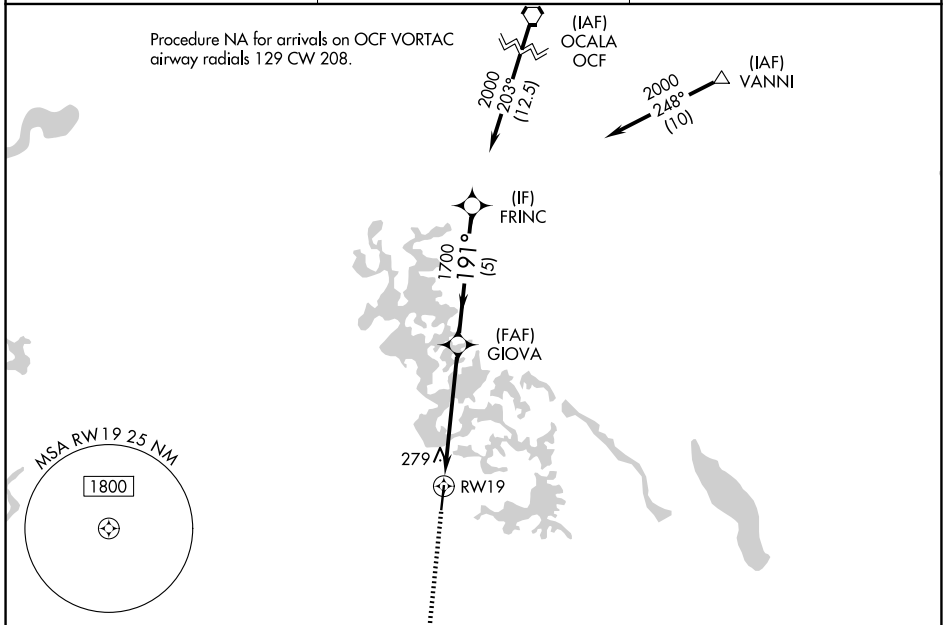
INVERNESS (INF')

RNP APCH.

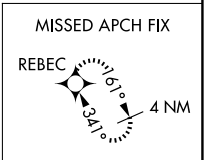
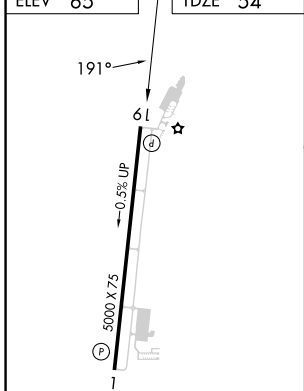
⚠ **⚠** Rwy 19 helicopter visibility reduction below 1 SM NA.

MISSED APPROACH: Climb to 2000 direct BOWSK and on track 176° to REBEC and hold.

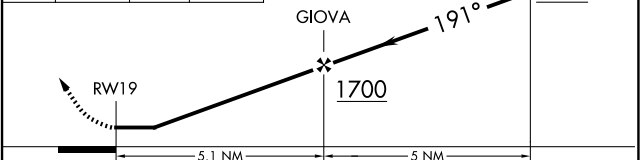
AWOS-3 119.975	JACKSONVILLE APP CON 118.6 251.15	UNICOM 122.725 (CTAF) 📻
--------------------------	---	--



ELEV 65	TDZE 54
---------	---------



2000	BOWSK	REBEC	Visual Segment - Obstacles.	FRINC
↑	✧	tr 176°		✧



CATEGORY	A	B	C	D
LNAV MDA	580-1	526 (600-1)	580-1½ 526 (600-1½)	NA
CIRCLING	660-1	595 (600-1)	660-1½ 595 (600-1½)	NA

MIRL Rwy 1-19 **📻**
REIL Rwy 1 and 19 **📻**