

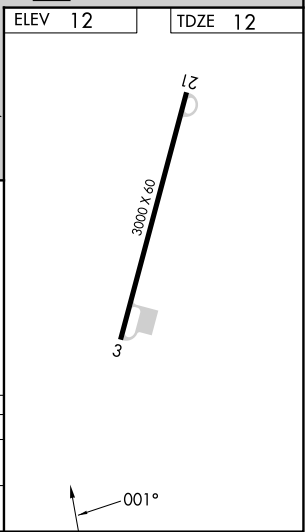
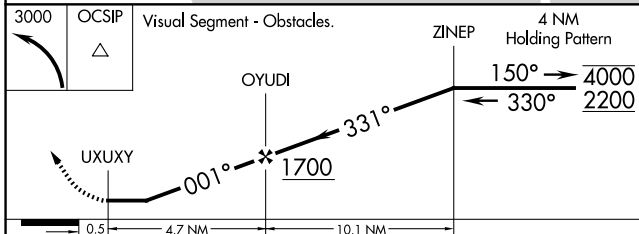
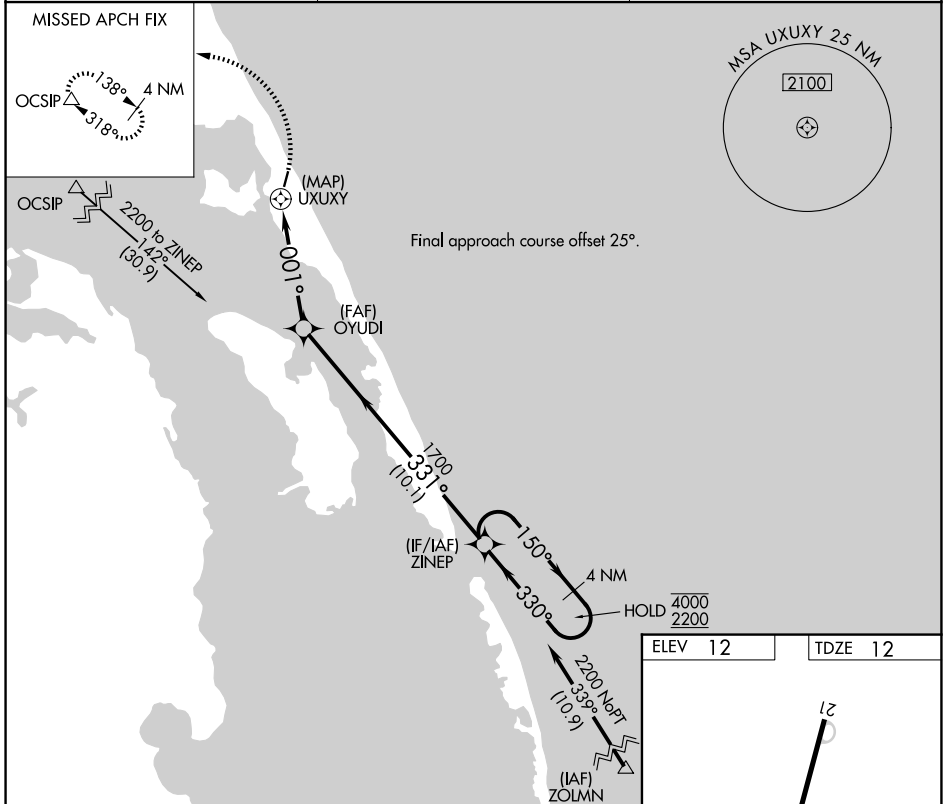
APP CRS	Rwy Ldg	<b>3000</b>
<b>001°</b>	TDZE	<b>12</b>
	Apt Elev	<b>12</b>

# RNAV (GPS) RWY 3

FIRST FLIGHT (F'FA)

RNP APCH - GPS.	MISSED APPROACH: Climbing left turn to 3000 direct OCSIP and hold.
▼ Procedure NA at night.	
▲ Rwy 3 helicopter visibility reduction below 1 SM NA.	

AWOS-3 <b>118.075</b>	CHERRY POINT APP CON <b>124.725 350.35</b>	CTAF <b>122.9</b>
--------------------------	---	----------------------



CATEGORY	A	B	C	D
LNAV MDA	480-1	468 (500-1)		NA
CIRCLING	520-1 508 (600-1)	540-1 528 (600-1)		NA

SE-2, 16 APR 2026 to 14 MAY 2026

SE-2, 16 APR 2026 to 14 MAY 2026