

WAAS CH <b>62837</b> <b>W11A</b>	APP CRS <b>111°</b>	Rwy Ldg TDZE <b>721</b> Apt Elev <b>721</b>	<b>3850</b>
--	------------------------	---	-------------

# RNAV (GPS) RWY 11

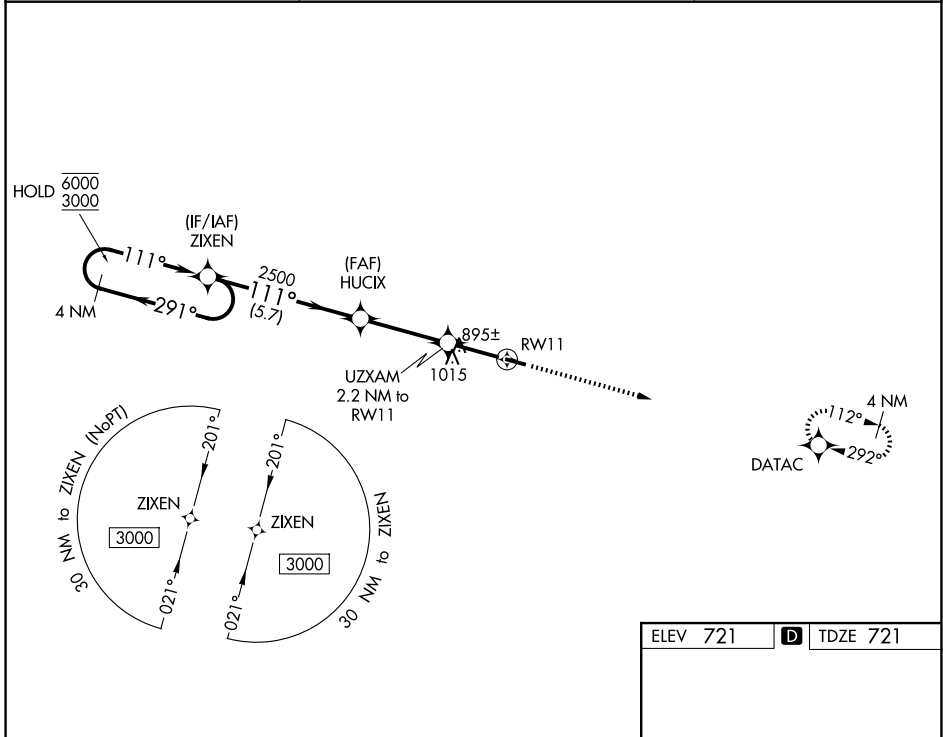
CYNTHIANA-HARRISON COUNTY (Ø18)

RNP APCH.

**▼** Procedure NA at night. Rwy 11 helicopter visibility reduction below 1 SM NA.  
**▲ NA** Use Georgetown altimeter setting; when not received, use Lexington altimeter setting and increase all MDA 40 feet.

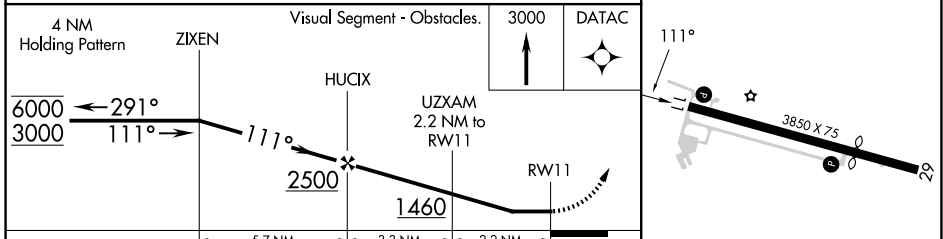
MISSED APPROACH:  
Climb to 3000 direct  
DATAC and hold.

27K AWOS-3 <b>119.975</b>	LEXINGTON APP CON <b>120.15 259.3</b> (040°-220°) <b>120.75 298.9</b> (221°-039°)	UNICOM <b>122.8</b> (CTAF) <b>Ø</b>
------------------------------	---	--



SE-1, 16 APR 2026 to 14 MAY 2026

SE-1, 16 APR 2026 to 14 MAY 2026



ELEV 721		D TDZE 721	
CATEGORY	A	B	C
LP MDA	1220-1	499 (500-1)	NA
LNAV MDA	1300-1	579 (600-1)	NA
CIRCLING	1340-1 619 (700-1)	1560-1¼ 839 (900-1¼)	NA

MIRL Rwy 11-29 **Ø**  
REIL Rws 11 and 29 **Ø**