

APP CRS	Rwy Idg	3997
281°	TDZE	351
	Apt Elev	351

RNAV (GPS) RWY 28

KENTUCKY DAM STATE PARK (M34)

RNP APCH - GPS.

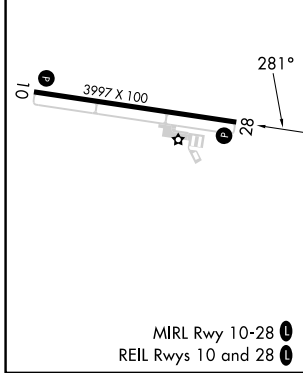
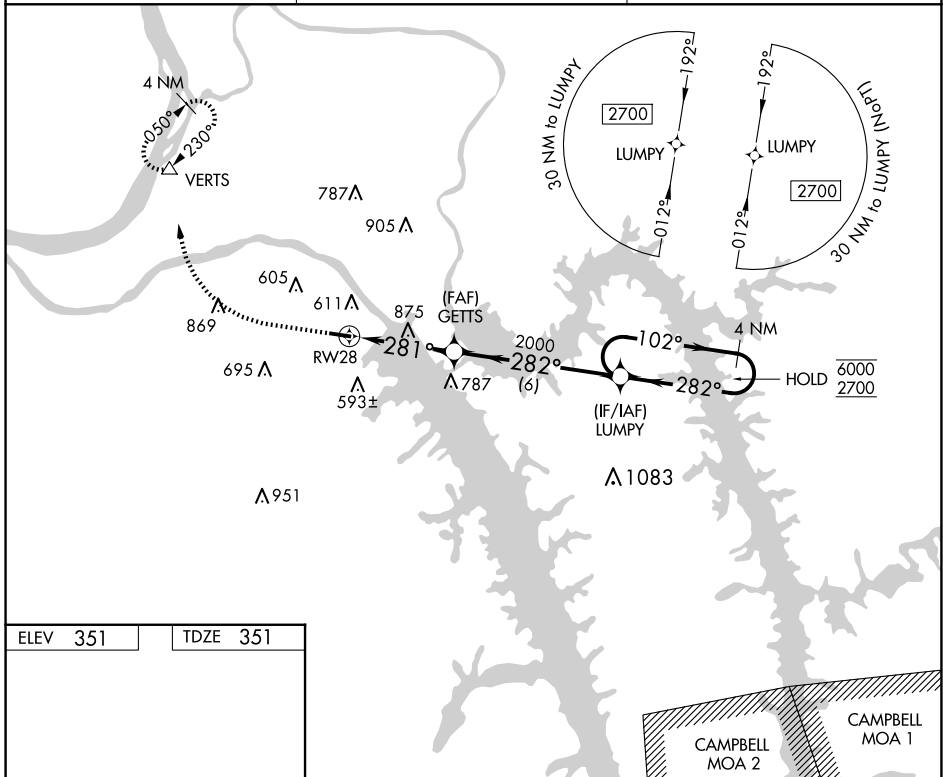
∇ Circling NA south of Rwy 10-28. Procedure NA at night. Rwy 28 helicopter visibility reduction below 1 SM NA. Use Paducah altimeter setting. Avoid Campbell MOA/A-371 when active.

MISSED APPROACH: Climb to 1800 then climbing right turn to 2700 direct VERTS and hold.

PAH ASOS
118.375

MEMPHIS CENTER
133.65 292.15

UNICOM
123.0 (CTAF) 0



1800	2700	VERTS	VGSi and descent angles not coincident (VGSi Angle 4.00/TCH 34).	
			4 NM Holding Pattern	
CATEGORY	A	B	C	D
LNAV MDA	1200-1 849 (900-1)	1200-1¼ 849 (900-1¼)	NA	
CIRCLING	1200-1¼	849 (900-1¼)	NA	

SE-1, 16 APR 2026 to 14 MAY 2026

SE-1, 16 APR 2026 to 14 MAY 2026