

APP CRS	Rwy Idg	<b>3199</b>
<b>087°</b>	TDZE	<b>752</b>
	Apt Elev	<b>752</b>

# RNAV (GPS) RWY 9

BUFFALO-LANCASTER RGNL (BQR)

RNP APCH - GPS.

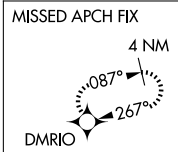
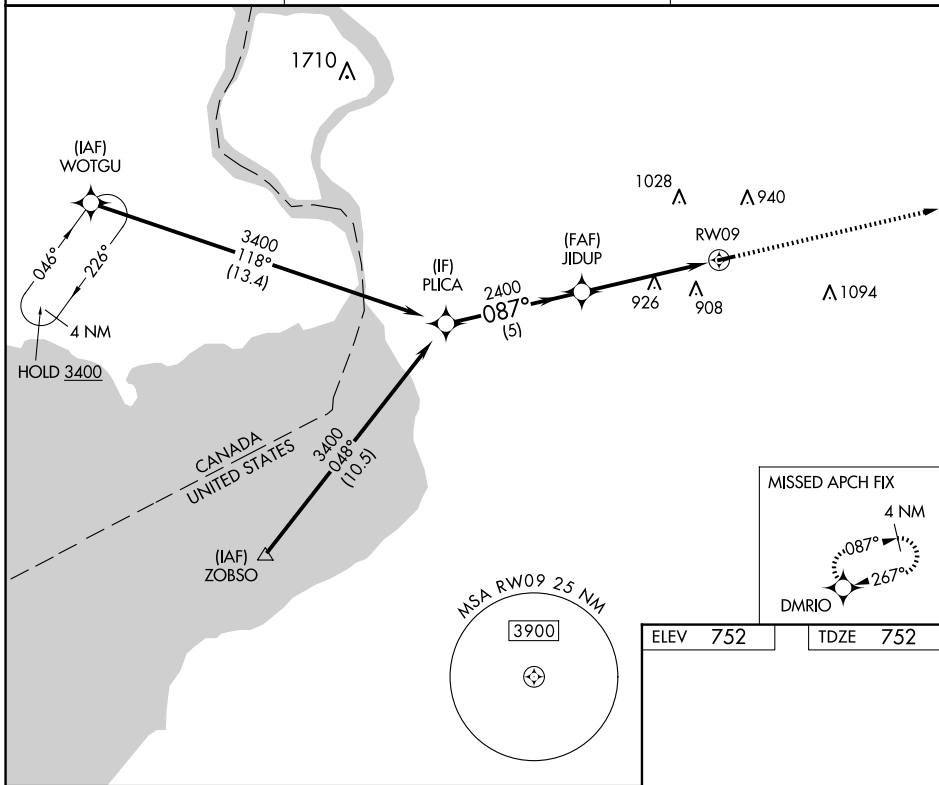
**⚠ NA** When Circling to Rwy 27 at night, operational VGSI required, remain on or above VGSI glidepath until threshold. Rwy 9 helicopter visibility reduction below 3/4 SM NA. Use Buffalo Niagara Intl altimeter setting.

MISSED APPROACH: Climb to 3400 direct DMRIO and hold, continue climb-in-hold to 3400.

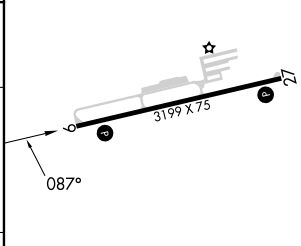
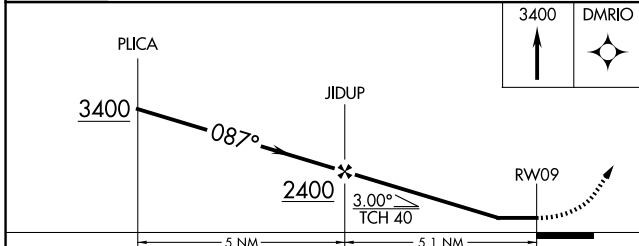
BUF ASOS  
**135.35**

BUFFALO APP CON  
**126.15 263.125**

UNICOM  
**123.05 (CTAF) 0**



ELEV	<b>752</b>	TDZE	<b>752</b>
------	------------	------	------------



CATEGORY	A	B	C	D
RNAV MDA	1200-1	448 (500-1)		NA
CIRCLING	1220-1 468 (500-1)	1320-1 568 (600-1)		NA

MIRL Rwy 9-27 **0**  
REIL Rws 9 and 27 **0**

NE-2, 16 APR 2026 to 14 MAY 2026

NE-2, 16 APR 2026 to 14 MAY 2026