

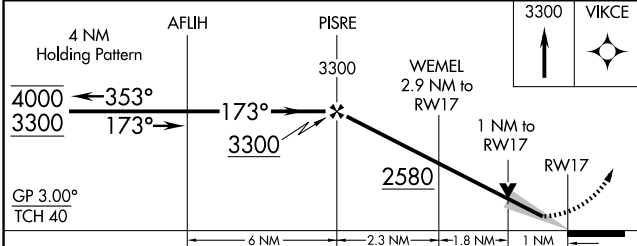
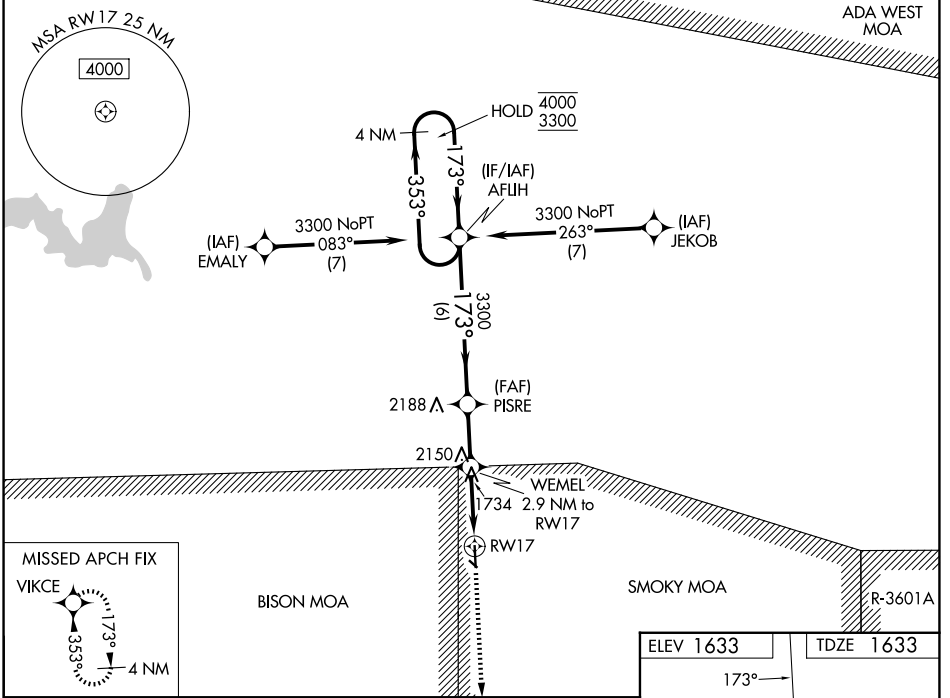
WAAS CH 69444 W17A	APP CRS 173°	Rwy Ldg TDZE 1633 Apt Elev 1633
--	------------------------	---

RNAV (GPS) RWY 17

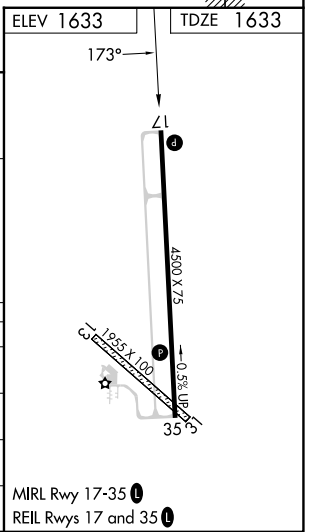
ELLSWORTH MUNI (9K7)

RNP APCH - GPS.	MISSED APPROACH: Climb to 3300 direct VIKCE and hold.
<p>⚠ Circling NA to Rwys 13 and 31. For uncompensated Baro-VNAV systems, LNAV/VNAV NA below -18°C or above 54°C.</p>	

AWOS-3PT 119.675	KANSAS CITY CENTER 134.9 363.2	UNICOM 122.7 (CTAF) 0
----------------------------	--	---------------------------------



CATEGORY	A	B	C	D
LPV DA	1833-1 200 (200-1)			NA
LNAV/VNAV DA	1883-1 250 (300-1)			NA
LNAV MDA	2000-1 367 (400-1)			NA
CIRCLING	2200-1 567 (600-1)		2540-2 ³ / ₄ 907 (1000-2 ³ / ₄)	NA



NC-2, 16 APR 2026 to 14 MAY 2026

NC-2, 16 APR 2026 to 14 MAY 2026