

(FLCON1.DRAKE) 23278

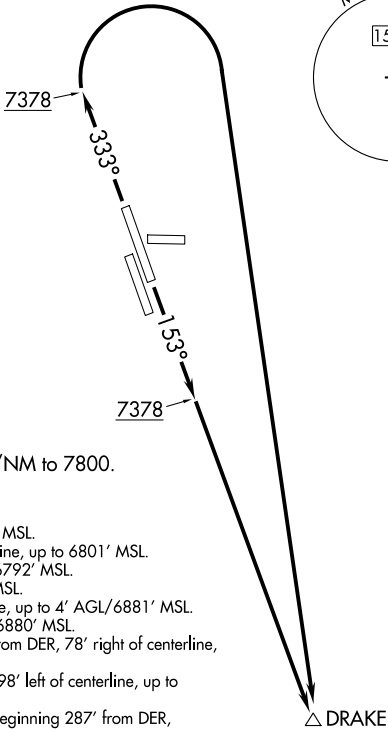
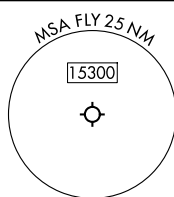
AL-10948 (FAA)

FALCON ONE DEPARTURE (OBSTACLE) (RNAV)

MEADOW LAKE (F'L Y)
COLORADO SPRINGS, COLORADO

SPRINGS DEP CON
124.0 257.875
DENVER CENTER
127.55 256.875
AWOS-3PT
118.45

RNAV 1 - GPS.



NOTE: Intensive USAF student training invof
Colorado Springs and Pueblo Colorado.

TAKEOFF MINIMUMS

Rwys 8, 16, 26, 34: NA - Environmental.

Rwy 15: Standard

Rwy 33: Standard with minimum climb of 261'/NM to 7800.

TAKEOFF OBSTACLE NOTES

- Rwy 15: Terrain 7' from DER, 193' right of centerline, 6792' MSL.
Terrain beginning 7' from DER, 265' right of centerline, up to 6801' MSL.
Sign 13' from DER, 124' left of centerline, 3' AGL/6792' MSL.
Tree 147' from DER, 322' left of centerline, 6799' MSL.
- Rwy 33: Signs beginning 13' from DER, 126' left of centerline, up to 4' AGL/6881' MSL.
Sign 13' from DER, 71' right of centerline, 3' AGL/6880' MSL.
Aircraft, trees and vehicles on road beginning 28' from DER, 78' right of centerline, up to 44' AGL/6923' MSL.
Pole, fence and terrain beginning 121' from DER, 198' left of centerline, up to 25' AGL/6907' MSL.
Building, terrain, fence, pole and vehicles on road beginning 287' from DER, 2' left of centerline, up to 25' AGL/6911' MSL.
Tree 783' from DER, 523' left of centerline, 6921' MSL.
Tree and vehicles on road beginning 904' from DER, 50' right of centerline, up to 6924' MSL.
Tree, vehicles on road and pole beginning 1104' from DER, 8' left of centerline, up to 6929' MSL.
Trees and vehicles on road beginning 1280' from DER, 14' right of centerline, up to 6934' MSL.
Tree 1456' from DER, 763' left of centerline, 6932' MSL.
Tree 1655' from DER, 650' left of centerline, 6944' MSL.
Tree 1741' from DER, 519' left of centerline, 6953' MSL.
Trees and buildings beginning 1852' from DER, 406' left of centerline, up to 6977' MSL.
Trees beginning 2878' from DER, 1137' left of centerline, up to 6995' MSL.
Tree 3403' from DER, 1199' left of centerline, 7000' MSL.
Tree 3660' from DER, 1120' left of centerline, 7003' MSL.
Trees beginning 3747' from DER, 897' left of centerline, up to 7011' MSL.
Tree 4510' from DER, 1244' left of centerline, 7013' MSL.
Tree 4788' from DER, 1254' left of centerline, 7017' MSL.
Tree 4799' from DER, 1068' left of centerline, 7019' MSL.
Tree 4978' from DER, 1015' left of centerline, 7020' MSL.
Building 5309' from DER, 1895' left of centerline, 38' AGL/7024' MSL.
Spire and building beginning 5363' from DER, 287' left of centerline, up to 66' AGL/7036' MSL.
Buildings beginning 1.1 NM from DER, 2240' left of centerline, up to 36' AGL/7068' MSL.
Building 1.2 NM from DER, 2417' left of centerline, 36' AGL/7069' MSL.

NOTE: Chart not to scale.

DEPARTURE ROUTE DESCRIPTION

TAKEOFF RUNWAY 15: Climb on heading 153° to 7378, then climb direct DRAKE, expect filed altitude within 10 minutes after departure.

TAKEOFF RUNWAY 33: Climb on heading 333° to 7378, then climbing right turn direct DRAKE, expect filed altitude within 10 minutes after departure.

FALCON ONE DEPARTURE (OBSTACLE) (RNAV)

(FLCON1.DRAKE) 05OCT23

COLORADO SPRINGS, COLORADO
MEADOW LAKE (F'L Y)

SW-1, 16 APR 2026 to 14 MAY 2026

SW-1, 16 APR 2026 to 14 MAY 2026