

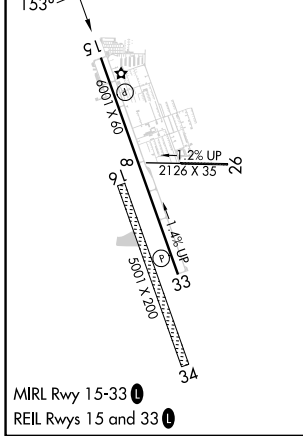
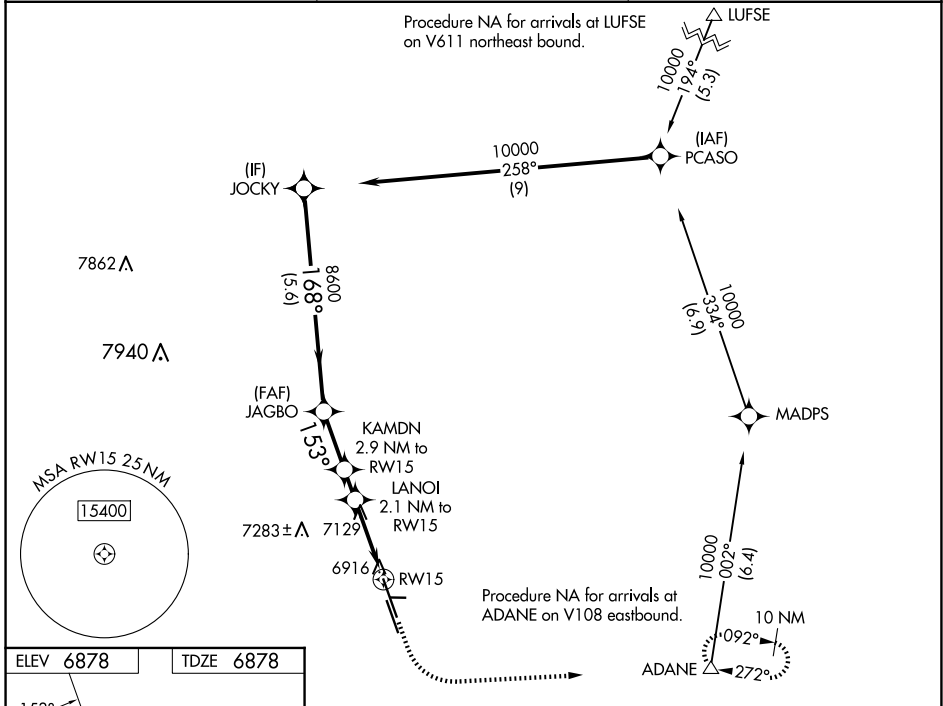
WAAS CH <b>50146</b> <b>W15A</b>	APP CRS <b>153°</b>	Rwy Idg TDZE Apt Elev	<b>6001</b> <b>6878</b> <b>6878</b>
--	------------------------	-----------------------------	---

# RNAV (GPS) RWY 15

MEADOW LAKE (FLY)

RNP APCH - GPS.	MISSED APPROACH: Climb to 7400, then climbing left turn to 9800 direct ADANE and hold, continue climb-in-hold to 9800.
<p><b>⚠</b> Rwy 15 helicopter visibility reduction below 1 SM NA. For uncompensated Baro-VNAV systems, LNAV/VNAV NA below -28°C or above 54°C.</p> <p><b>⚠</b> Circling NA southwest of Rwy 15-33. Circling NA to Rwys 16, 26, 8 and 34. Straight-in Rwy 15 NA at night, Circling Rwy 15 NA at night.</p>	

AWOS-3PT <b>118.45</b>	SPRINGS APP CON <b>124.0 257.875</b>	UNICOM <b>122.7 (CTAF) ①</b>
---------------------------	---	---------------------------------



JOCKY	VGSI and RNAV glidepath not coincident (VGSI Angle 3.50/TCH 42).		7400	9800	ADANE
10000	168°	8600	8020	7720	
GP 3.50°					
TCH 59					
CATEGORY	A	B	C	D	
LPV DA	7176-1	298 (300-1)		NA	
LNAV/VNAV DA	7343-1 3/8	465 (500-1 3/8)		NA	
LNAV MDA	7400-1	522 (600-1)		NA	
CIRCLING	7400-1 522 (600-1)	7440-1 562 (600-1)		NA	

SW-1, 16 APR 2026 to 14 MAY 2026

SW-1, 16 APR 2026 to 14 MAY 2026