

WAAS CH <b>90146</b> <b>W33A</b>	APP CRS <b>333°</b>	Rwy Idg TDZE Apt Elev	<b>6001</b> <b>6826</b> <b>6878</b>
--	------------------------	-----------------------------	---

# RNAV (GPS) RWY 33

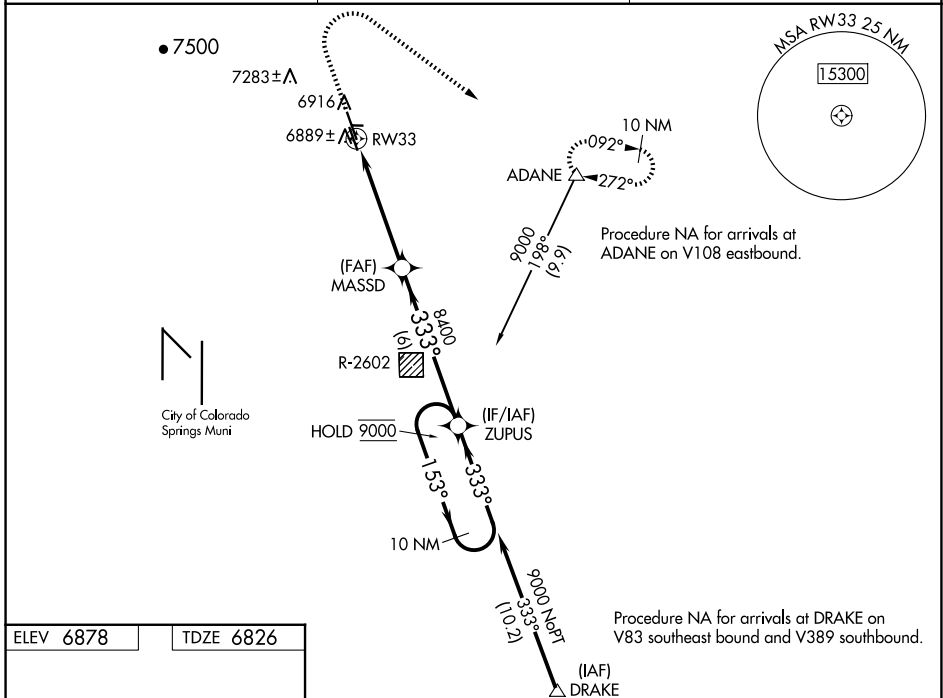
MEADOW LAKE (F'L Y)

RNP APCH - GPS.

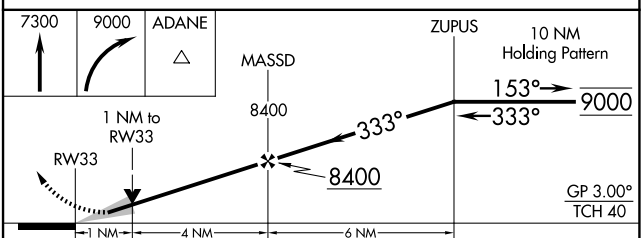
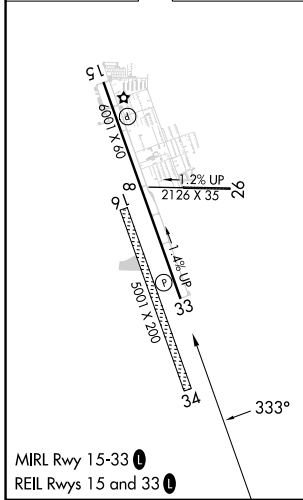
**⚠** For uncompensated Baro-VNAV systems, LNAV/VNAV NA below -28°C or above 54°C. Circling NA Rwy 16, 8, 26 and 34. Circling Rwy 15 NA at night. Circling NA southwest of Rwy 15-33.

MISSED APPROACH: Climb to 7300, then climbing right turn to 9000 direct ADANE and hold, continue climb-in-hold to 9000.

AWOS-3PT <b>118.45</b>	SPRINGS APP CON <b>124.0 257.875</b>	UNICOM <b>122.7 (CTAF) 0</b>
---------------------------	---	---------------------------------



ELEV 6878	TDZE 6826
-----------	-----------



CATEGORY	A	B	C	D
LPV DA	7026- <sup>3</sup> / <sub>4</sub>	200 (200- <sup>3</sup> / <sub>4</sub> )		NA
LNAV/VNAV DA	7079- <sup>3</sup> / <sub>4</sub>	253 (300- <sup>3</sup> / <sub>4</sub> )		NA
LNAV MDA	7140-1	314 (300-1)		NA
CIRCLING	7340-1	7440-1		NA
	462 (500-1)	562 (600-1)		

SW-1, 16 APR 2026 to 14 MAY 2026

SW-1, 16 APR 2026 to 14 MAY 2026