

WAAS CH 56344 W16A	APP CRS 163°	Rwy Ldg 4700 TDZE 5374 Apt Elev 5374
--	------------------------	---

RNAV (GPS) RWY 16

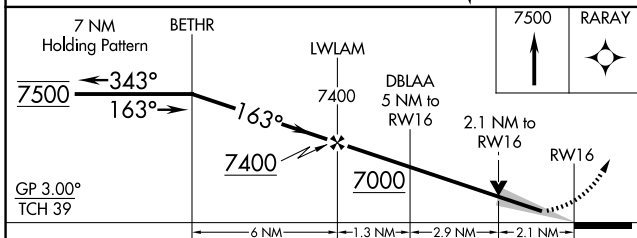
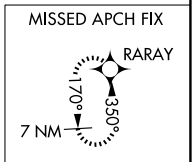
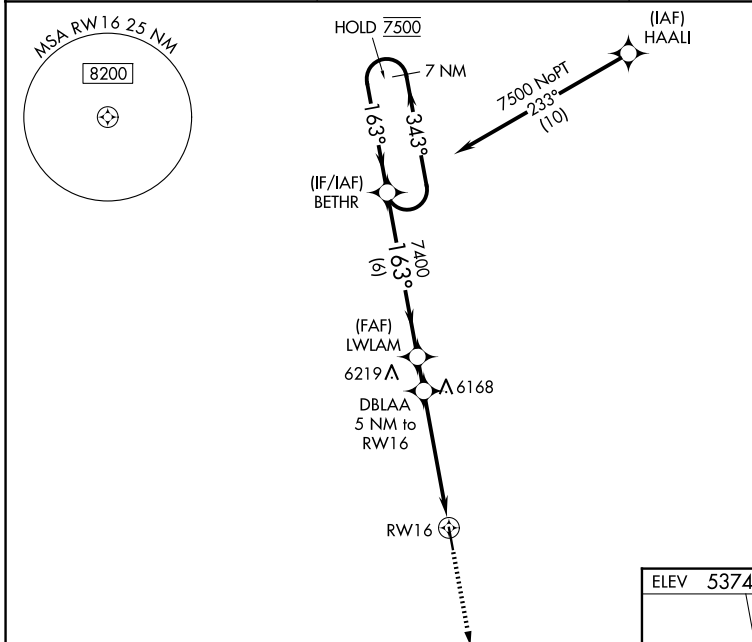
LIMON MUNI (LIC)

RNP APCH - GPS.

⚠ For uncompensated Baro-VNAV systems, LNAV/VNAV NA below -25°C or above 54°C. Baro-VNAV and VDP NA when using CFO altimeter setting. When local altimeter setting not received, use CFO altimeter setting and increase LPV DA to 5760 feet and all visibilities 1/8 SM. Increase LNAV/VNAV DA to 5845 feet and all visibilities 3/8 SM. Increase all MDAs 140 feet and LNAV visibilities Cat B/C 1/2 SM, and Circling all visibilities 1/2 SM.

MISSED APPROACH: Climb to 7500 direct RARAY and hold.

ASOS 121.125	DENVER CENTER 133.4 377.175	CTAF 122.9
------------------------	---------------------------------------	----------------------



ELEV 5374	TDZE 5374
-----------	-----------

163°
91'
4700 X 60'
0.35% DF
34'

MIRL Rwy 16-34

CATEGORY	A	B	C	D
LPV DA	5624-1 250 (300-1)			NA
LNAV/VNAV DA	5709-1 335 (400-1)			NA
LNAV MDA	6080-1 706 (800-1)	6080-2 706 (800-2)		NA
CIRCLING	6080-1 706 (800-1)	6220-2 1/2 846 (900-2 1/2)		NA

SW-1, 16 APR 2026 to 14 MAY 2026

SW-1, 16 APR 2026 to 14 MAY 2026