

WAAS CH <b>42744</b> <b>W34A</b>	APP CRS <b>343°</b>	Rwy Ldg <b>4700</b> TDZE <b>5365</b> Apt Elev <b>5374</b>
--	------------------------	---

# RNAV (GPS) RWY 34

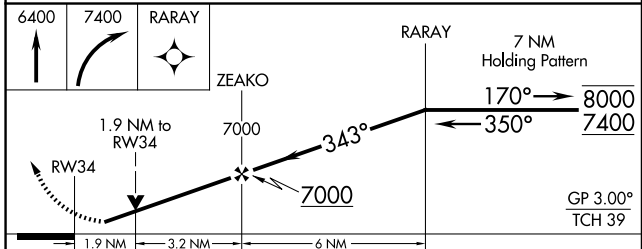
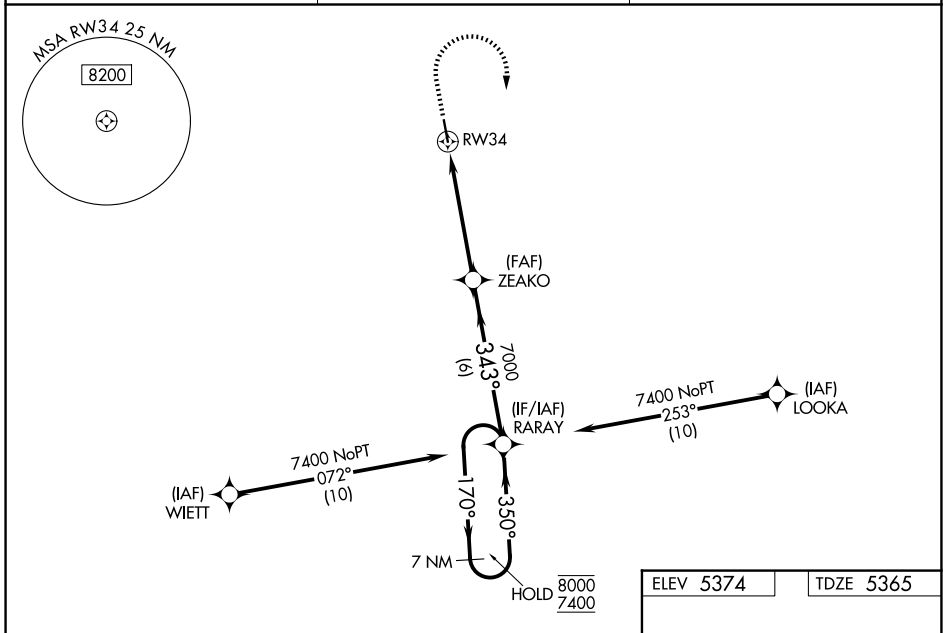
LIMON MUNI (LIC)

RNP APCH - GPS.

**⚠** For uncompensated Baro-VNAV systems, LNAV/VNAV NA below -25°C or above 54°C. Rwy 34 helicopter visibility reduction below 3/4 SM NA. Baro-VNAV and VDP NA when using CFO altimeter setting. When local altimeter not received, use CFO altimeter setting and increase LPV DA to 5751 feet and all visibilities 1/2 SM. Increase LNAV/VNAV DA to 5960 feet and all visibilities 3/8 SM. Increase all MDAs 140 feet and LNAV visibility Cat B/C 3/4 SM, and Circling visibility Cat B/C 1/2 SM.

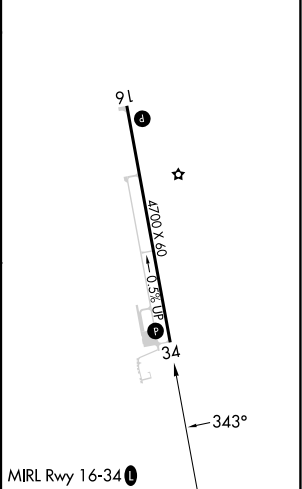
MISSED APPROACH: Climb to 6400, then climbing right turn to 7400 direct RARAY and hold.

ASOS <b>121.125</b>	DENVER CENTER <b>133.4 377.175</b>	CTAF <b>122.9</b>
------------------------	---------------------------------------	----------------------



ELEV 5374	TDZE 5365
-----------	-----------

CATEGORY	A	B	C	D
LPV DA	5615-1		250 (300-1)	NA
LNAV/VNAV DA	5824-1 3/8		459 (500-1 3/8)	NA
LNAV MDA	6000-1	635 (700-1)	6000-1 3/4 635 (700-1 3/4)	NA
CIRCLING	6000-1	626 (700-1)	6220-2 1/2 846 (900-2 1/2)	NA



SW-1, 16 APR 2026 to 14 MAY 2026

SW-1, 16 APR 2026 to 14 MAY 2026