

WAAS CH 90547 W25A	APP CRS 260°	Rwy Ldg TDZE Apt Elev	5305 6141 6179
--	------------------------	-----------------------------	---

RNAV (GPS) RWY 25

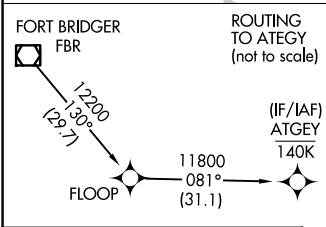
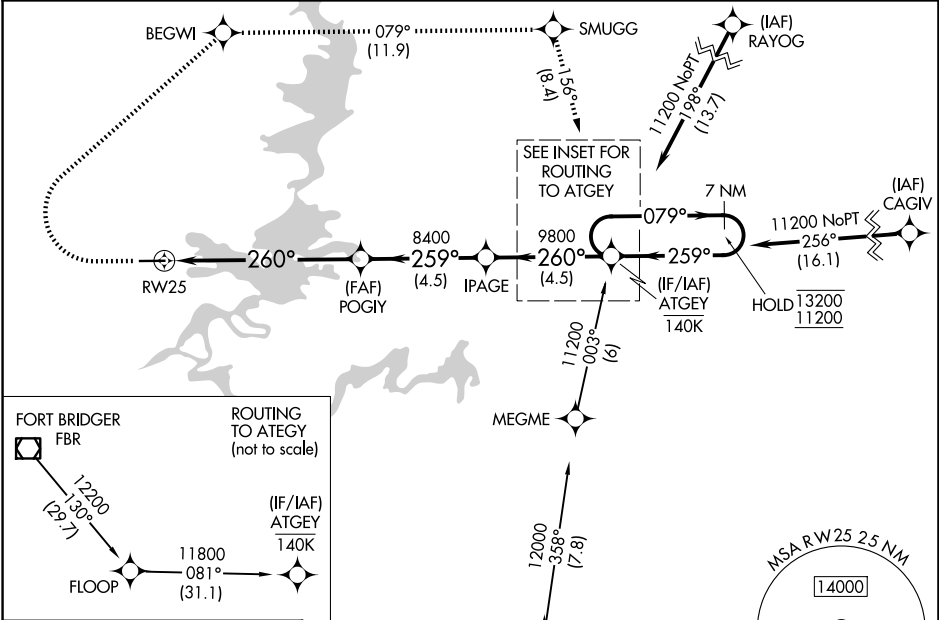
MANILA (40U)

RNP APCH - GPS.

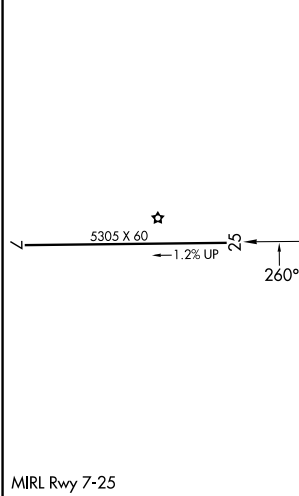
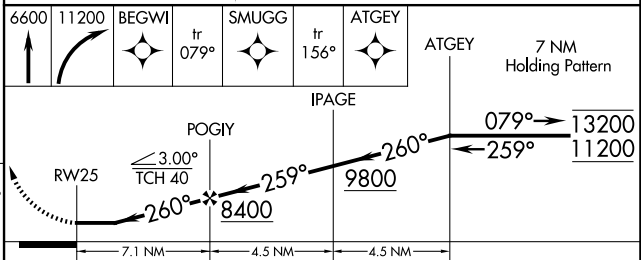
⚠ Rwy 25 helicopter visibility reduction below 1 SM NA.
Procedure NA at night. When local altimeter not received,
procedure NA.

MISSED APPROACH: Climb to 6600 then climbing right turn to 11200 direct BEGWI and on track 079° to SMUGG and on track 156° to ATGEY and hold.

AWOS-3PT 119.25	SALT LAKE CENTER 119.95 377.15	UNICOM 122.8 (CTAF)
---------------------------	--	-------------------------------



ELEV 6179	TDZE 6141
-----------	-----------



CATEGORY	A	B	C	D
LP MDA	6800-1	659 (700-1)		NA
LNAV MDA	6980-1 839 (900-1)	6980-1¼ 839 (900-1¼)		NA
CIRCLING	7120-1¼ 941 (1000-1¼)	7260-1½ 1081 (1100-1½)		NA

RNAV (GPS) RWY 25

SW-4, 16 APR 2026 to 14 MAY 2026

SW-4, 16 APR 2026 to 14 MAY 2026