

WAAS CH 65839 W03A	APP CRS 034°	Rwy Ldg TDZE Apt Elev	5021 5503 5516
--	------------------------	-----------------------------	---

RNAV (GPS) RWY 3

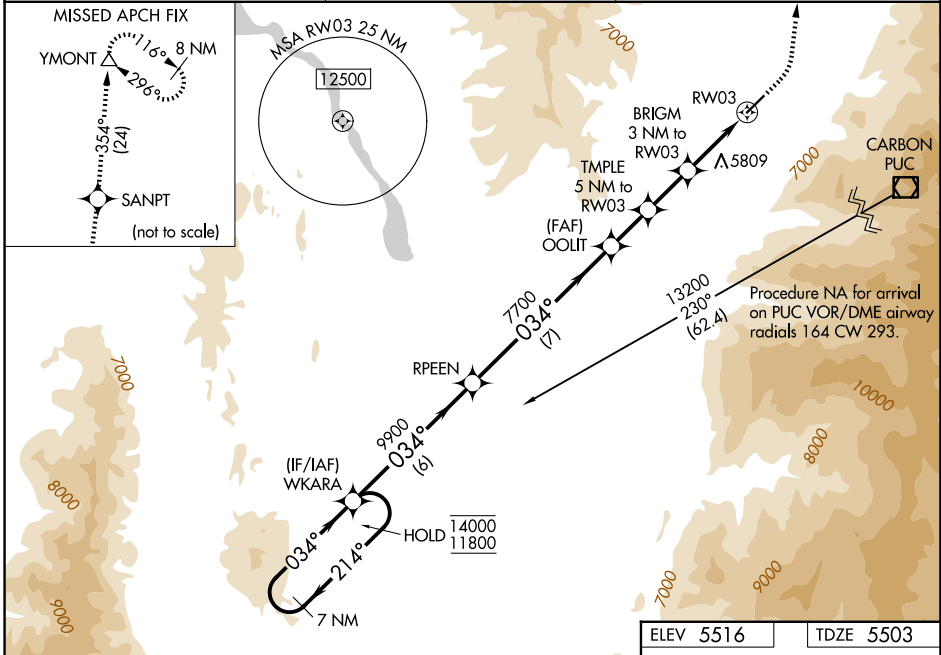
SANPETE COUNTY RGNL (41U)

RNP APCH - GPS.

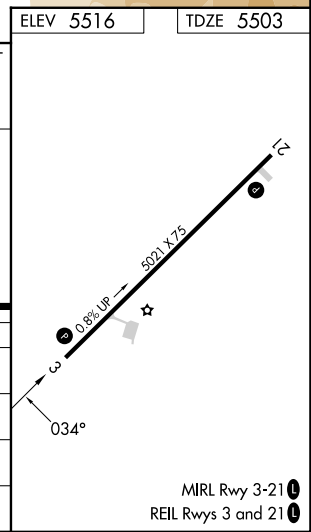
▼ When local altimeter setting not received, procedure NA. Procedure
 ▲ NA at night. Rwy 3 helicopter visibility reduction below 1 SM NA.
 Circling NA southeast of Rwy 3-21. Baro-VNAV NA.

MISSED APPROACH: Climb to 6020 then climbing left turn to 13000 direct SANPT and on track 354° direct YMONT and hold.

AWOS-3PT 120.025	SALT LAKE CENTER 133.6 296.25	UNICOM 122.8 (CTAF) 0
----------------------------	---	---------------------------------



7 NM Holding Pattern		WKARA	RPEEN	OOLIT	TUPLE	BRIGM	RW03	YMONT
14000 ← 214°		11800 → 034°	9900	7700	7100	6460		
GP 3.00°		TCH 40		7700		7100		6460
6 NM		7 NM		1.9 NM		2 NM		3 NM
CATEGORY	A	B		C		D		
LPV DA	5781-1		278 (300-1)					
LNAV/VNAV DA	5823-1		320 (400-1)				NA	
LNAV MDA	6000-1		497 (500-1)		6180-1 7/8		677 (700-1 7/8)	
CIRCLING	6000-1		484 (500-1)		6280-2 1/4		7620-3	
					764 (800-2 1/4)		2104 (2200-3)	



SW-4, 16 APR 2026 to 14 MAY 2026

SW-4, 16 APR 2026 to 14 MAY 2026