

APP CRS	Rwy Ldg	<b>3998</b>
<b>291°</b>	TDZE	<b>100</b>
	Apt Elev	<b>100</b>

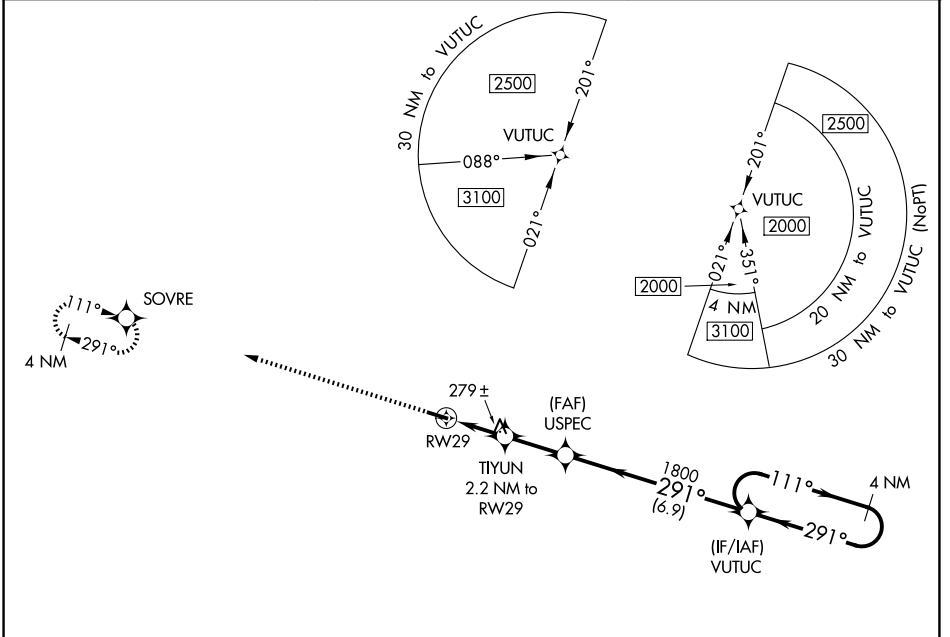
# RNAV (GPS) RWY 29

GENEVA MUNI (33J)

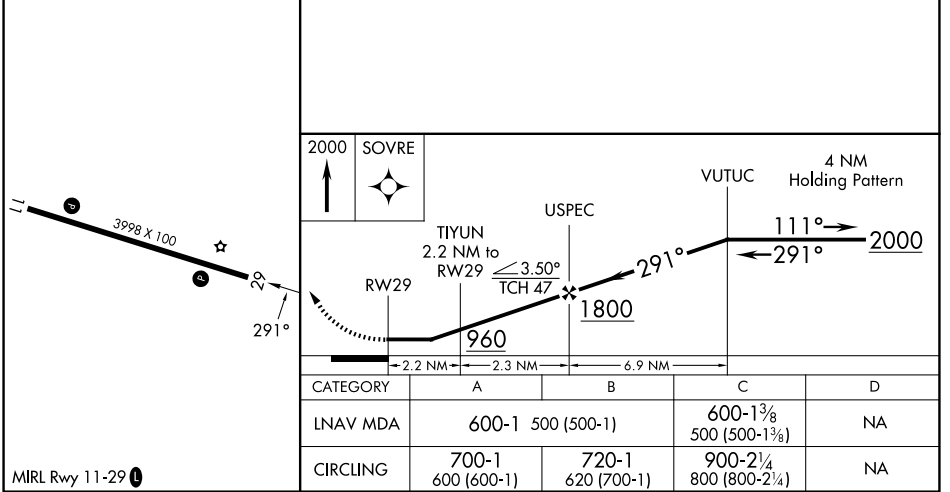
**NA** DME/DME RNP-0.3 NA. Procedure NA at night. Use Cairns AAF altimeter setting, when not received, use Dothan altimeter setting and increase all MDA 40 feet, and increase all Cat C visibilities ¼ SM. Rwy 29 helicopter visibility reduction below 1 SM NA.

**MISSED APPROACH:** Climb to 2000 direct SOVRE and hold.

KOZR ATIS <b>111.2 316.15</b>	CAIRNS APP CON ★ <b>133.75 270.35</b>	UNICOM <b>122.8 (CTAF) 0</b>
----------------------------------	--	---------------------------------



ELEV 100	TDZE 100
----------	----------



SE-4, 16 APR 2026 to 14 MAY 2026

SE-4, 16 APR 2026 to 14 MAY 2026