

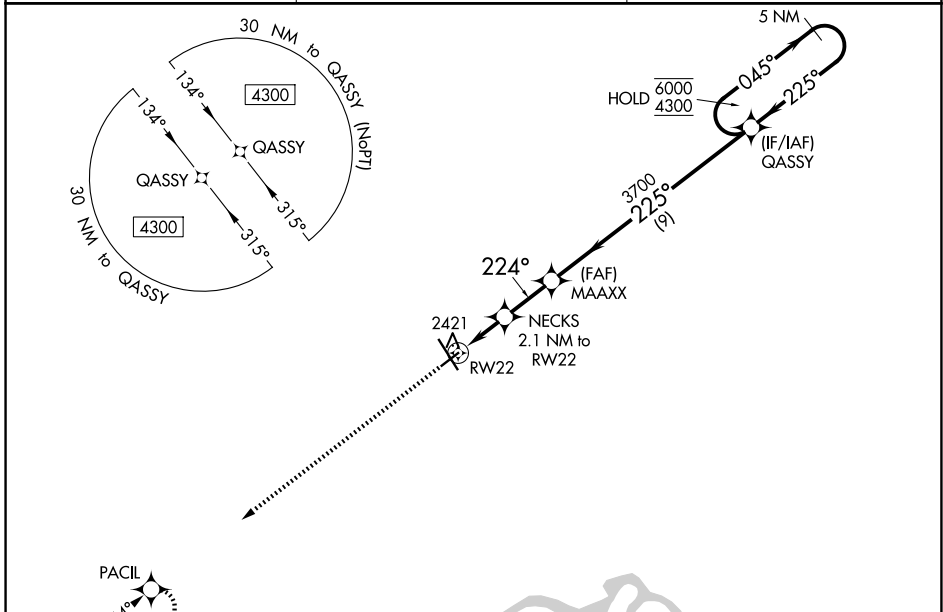
WAAS CH <b>93943</b> <b>W22A</b>	APP CRS <b>224°</b>	Rwy Ldg TDZE Apt Elev	<b>4502</b> <b>2339</b> <b>2356</b>
--	------------------------	-----------------------------	---

# RNAV (GPS) RWY 22

WILLISTON BASIN INTL (XWA)

RNP APCH-GPS.	MISSED APPROACH: Climb to 4300 direct PACIL and hold.
<p>For uncompensated Baro-VNAV systems, LNAV/VNAV NA below -19°C or above 54°C.</p>	

ASOS <b>125.925</b>	SALT LAKE CITY CENTER <b>126.85 305.2</b>	UNICOM <b>122.8 (CTAF)</b>
------------------------	--	-------------------------------



ELEV 2356	TDZE 2339			
<p>4300</p> <p>*LNAV only</p> <p>NECKS 2.1 NM to RWY 22</p> <p>MAAXX 3700</p> <p>QASSY 5 NM Holding Pattern</p> <p>6000 4300</p> <p>GP 3.00° TCH 40</p> <p>3020*</p> <p>3700</p> <p>045° →</p> <p>← 225°</p> <p>224°</p> <p>225°</p> <p>1.2 NM</p> <p>0.9 NM</p> <p>2.1 NM</p> <p>9 NM</p>				
CATEGORY	A	B	C	D
LPV DA	2539-1 200 (200-1)			
LNAV/VNAV DA	2589-1 250 (300-1)			
LNAV MDA	2740-1 401 (400-1)	2740-1 1/8 401 (400-1 1/8)		
CIRCLING	2760-1 404 (500-1)	2820-1 464 (500-1)	2820-1 1/2 464 (500-1 1/2)	2920-2 564 (600-2)

MIRL Rwy 4-22	
HIRL Rwy 14-32	
REIL Rws 4, 14 and 22	

NC-1, 16 APR 2026 to 14 MAY 2026

NC-1, 16 APR 2026 to 14 MAY 2026