

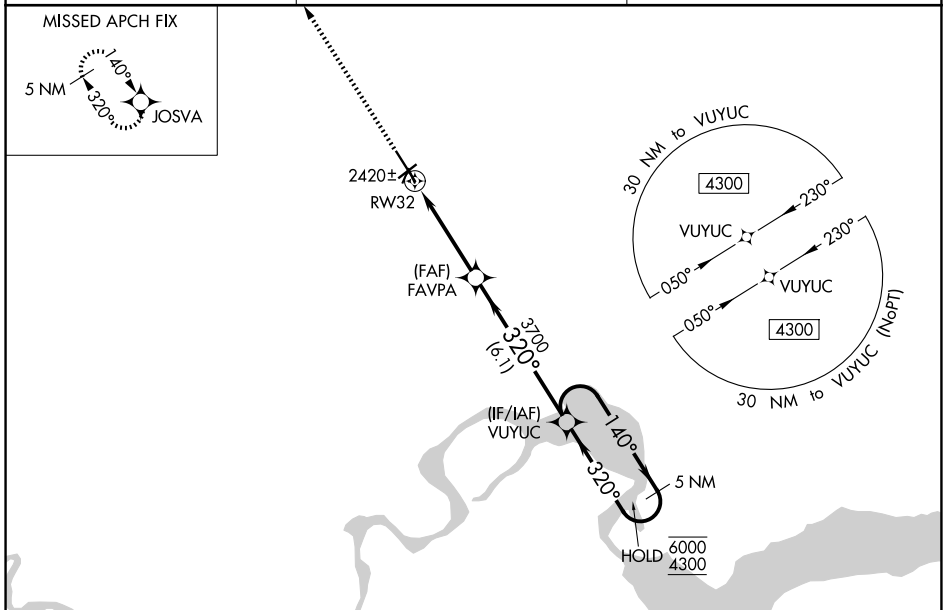
WAAS CH 78043 W32A	APP CRS 320°	Rwy Ldg 7503 TDZE 2350 Apt Elev 2353
--	------------------------	---

RNAV (GPS) RWY 32

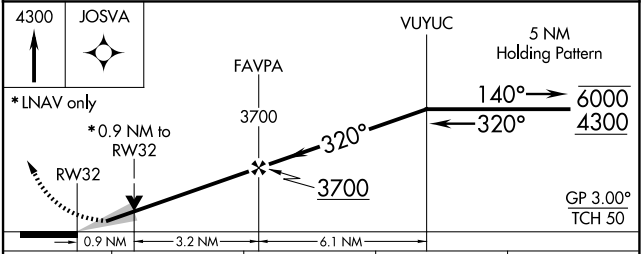
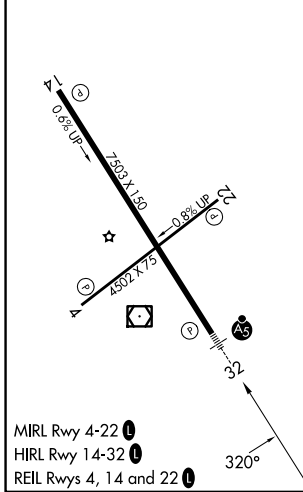
WILLISTON BASIN INTL (XWA)

RNP APCH.	MALSR	MISSED APPROACH: Climb to 4300 direct JOSVA and hold.
<p>▼ For uncompensated Baro-VNAV systems, LNAV/VNAV NA below -19°C or above 54°C. For inop ALS, increase LNAV/VNAV all Cats visibility to ¼ SM.</p> <p>▲</p>		

ASOS 125.925	SALT LAKE CITY CENTER 126.85 305.2	UNICOM 122.8 (CTAF) 1
------------------------	--	---------------------------------



ELEV 2353	D	TDZE 2350
-----------	----------	-----------



	A	B	C	D
CATEGORY				
LPV DA		2550-½	200 (200-½)	
LNAV/VNAV DA		2600-½	250 (300-½)	
LNAV MDA		2680-½	330 (400-½)	
CIRCLING	2760-1 407 (500-1)	2820-1 467 (500-1)	2820-1½ 467 (500-1½)	2920-2 567 (600-2)

NC-1, 16 APR 2026 to 14 MAY 2026

NC-1, 16 APR 2026 to 14 MAY 2026