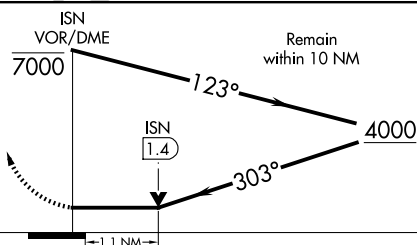
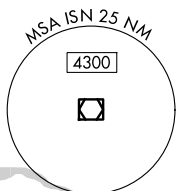
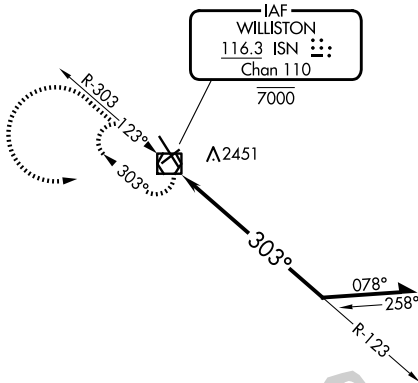


VOR/DME ISN 116.3 Chan 110	APP CRS 303°	Rwy Ldg TDZE Apt Elev 7503 2350 2356
--	------------------------	--

VOR RWY 32
WILLISTON BASIN INTL (XWA)

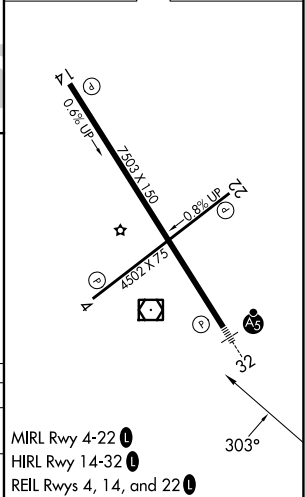
For inop ALS, increase S-32 Cats C/D visibility to 1 1/8 SM.	MALSR	MISSED APPROACH: Climb to 4300 then left turn direct ISN VOR/DME and hold

Procedure NA for arrival on ISN VOR/DME
airway radials 081 CW 146.



CATEGORY	A	B	C	D
S-32	2760-1/2	410 (500-1/2)	2760-3/4	410 (500-3/4)
CIRCLING	2760-1 404 (500-1)	2820-1 464 (500-1)	2820-1 1/2 464 (500-1 1/2)	2920-2 564 (600-2)

ELEV 2356	D	TDZE 2350
-----------	----------	-----------



MIRL Rwy 4-22 0
HIRL Rwy 14-32 0
REIL Rws 4, 14, and 22 0