

APP CRS	Rwy Idg	<b>6064</b>
<b>177°</b>	TDZE	<b>1711</b>
	Apt Elev	<b>1711</b>

# RNAV (RNP) Z RWY 18

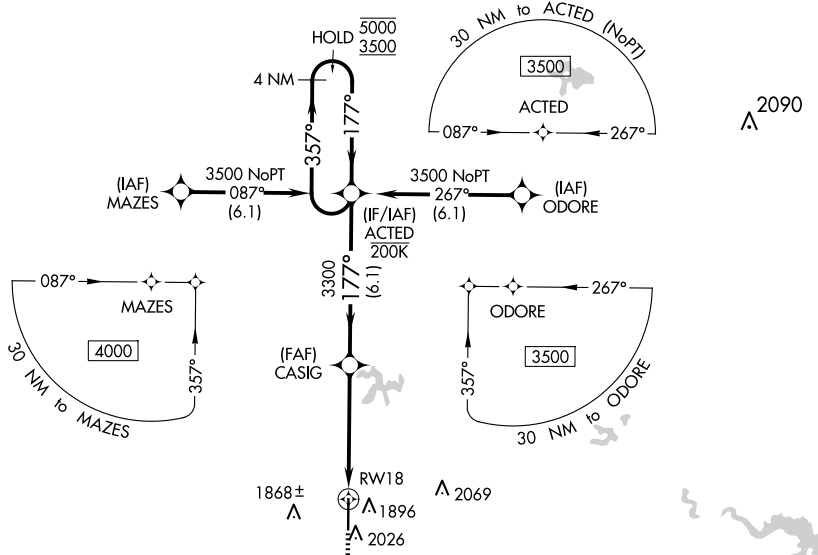
GREGORY M SIMMONS MEML (GZN)

RNP AR APCH - GPS.

**Procedure NA for aircraft with wingspan greater than 136 feet.**  
 For uncomparted Baro-VNAV systems, procedure NA below -18°C or above 54°C.

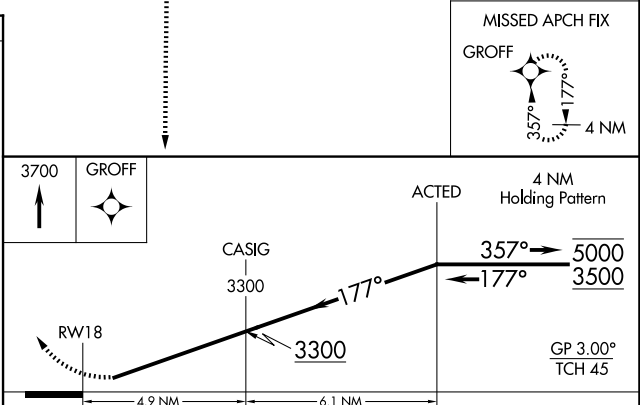
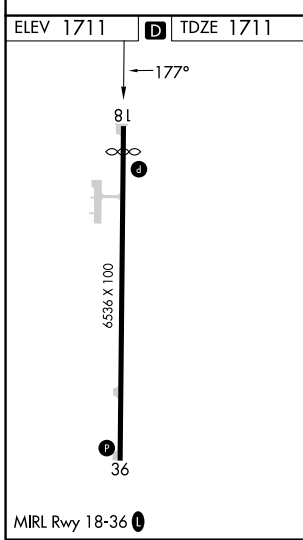
**MISSED APPROACH:** Climb to 3700 direct GROFF and hold.

AWOS-4 <b>118.0</b>	ABILENE APP CON <b>125.0 338.3</b>	CTAF <b>122.9</b>
------------------------	---------------------------------------	----------------------



SC-2, 16 APR 2026 to 14 MAY 2026

SC-2, 16 APR 2026 to 14 MAY 2026



CATEGORY	A	B	C	D
RNP 0.30 DA	1990-1	279 (300-1)		2011-1 300 (300-1)

**AUTHORIZATION REQUIRED**