

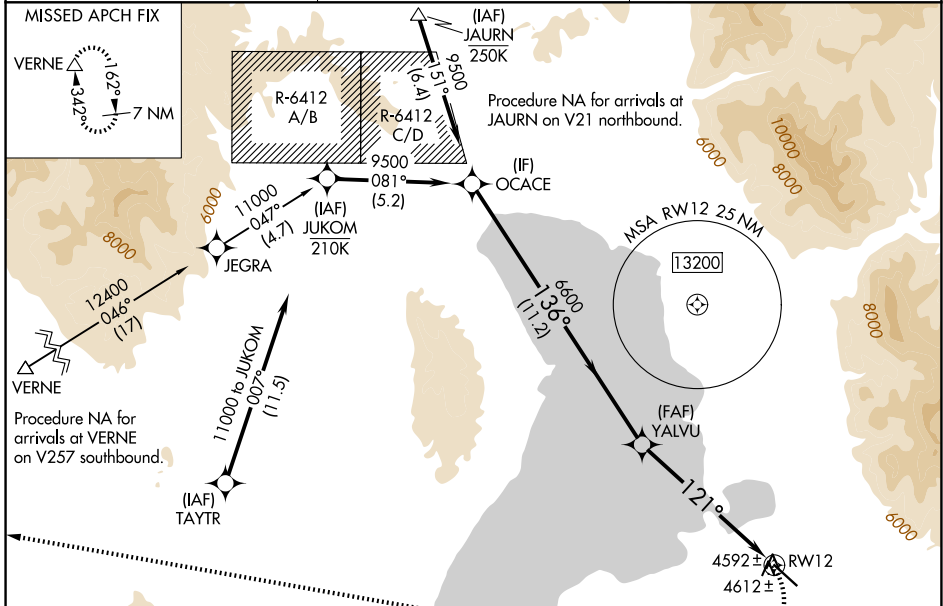
WAAS CH 82342	APP CRS 121°	Rwy Ldg TDZE Apt Elev	6500 4527 4530
-------------------------	------------------------	-----------------------------	---

RNAV (GPS) RWY 12

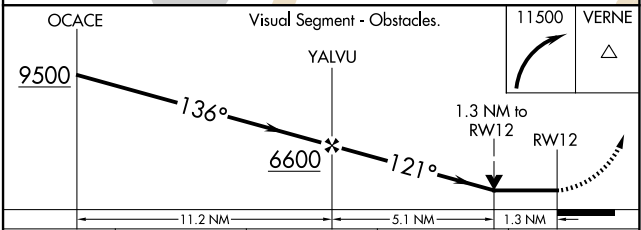
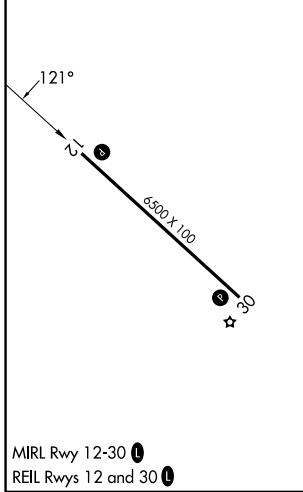
SPANISH FORK MUNI/WOODHOUSE FLD (SPK)

RNP APCH - GPS.	MISSED APPROACH: Climbing right turn to 11500 direct VERNE and hold. *Missed approach requires minimum climb of 380 feet per NM to 7600.
<p>V Rwy 12 helicopter visibility reduction below 3/4 SM NA. VDP NA when using PVU altimeter setting. When local altimeter setting not received, use PVU altimeter setting and increase all MDAs 20 feet.</p> <p>NA Circling NA for Cat D northeast of Rwy 12-30.</p> <p>33 -17°C</p>	

AWOS-3PT 119.275	SALT LAKE CITY APP CON 118.85 233.7	CTAF 122.9
----------------------------	---	----------------------



ELEV 4530	TDZE 4527
------------------	------------------



CATEGORY	A	B	C	D
LP MDA*	4980-1	453 (500-1)	4980-1 3/8	453 (500-1 3/8)
LNAV MDA*	4980-1	453 (500-1)	4980-1 3/8	453 (500-1 3/8)
LP MDA	6040-1 1/4 1513 (1600-1 1/4)	6040-1 1/2 1513 (1600-1 1/2)	6040-3	1513 (1600-3)
LNAV MDA	6160-1 1/4 1633 (1700-1 1/4)	6160-1 1/2 1633 (1700-1 1/2)	6160-3	1633 (1700-3)
CIRCLING	6160-1 1/4 1630 (1700-1 1/4)	6160-1 1/2 1630 (1700-1 1/2)	6160-3	1630 (1700-3)

SW-4, 16 APR 2026 to 14 MAY 2026

SW-4, 16 APR 2026 to 14 MAY 2026