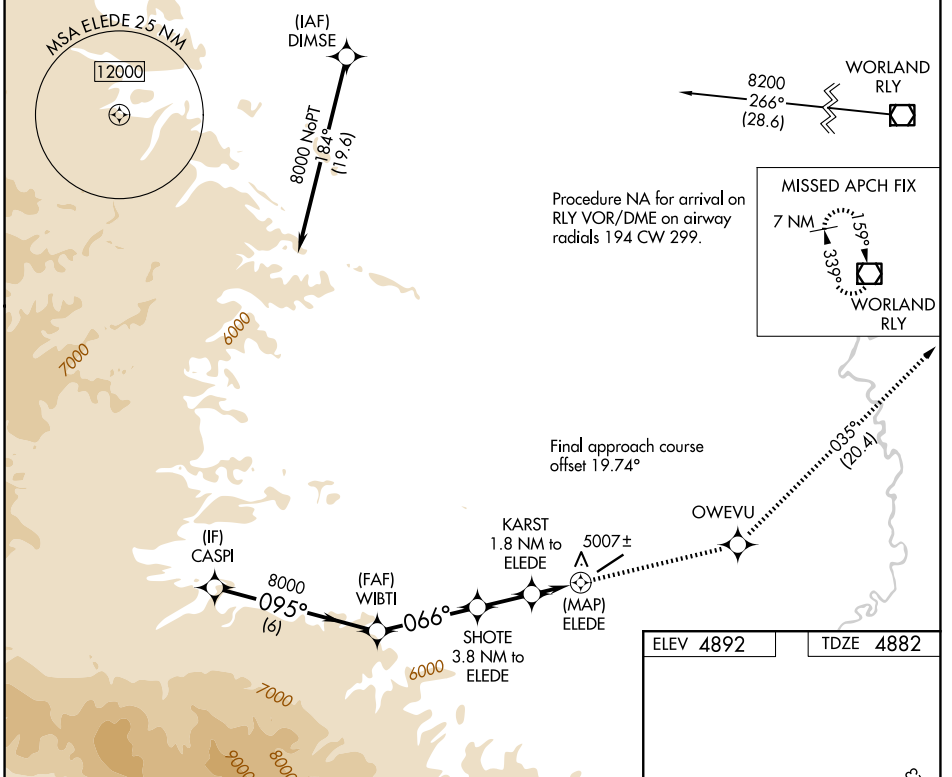


APP CRS	Rwy Ldg	<b>6370</b>
<b>066°</b>	TDZE	<b>4882</b>
	Apt Elev	<b>4892</b>

# RNAV (GPS) RWY 5

HOT SPRINGS COUNTY (HSG)

<p><b>⚠</b> Circling NA northwest of Rwy 5-23.  <b>⚠</b> DME/DME RNP-0.3 NA.                  Rwy 5 helicopter visibility reduction below 3/4 SM NA.</p>	<p>MISSED APPROACH: Climb to 8200 direct OWEVU and on track 035° to RLY VOR/DME and hold.</p>	
<p>AWOS-3PT <b>121.125</b></p>	<p>SALT LAKE CENTER <b>133.25 285.6</b></p>	<p>UNICOM <b>122.8 (CTAF) 0</b></p>

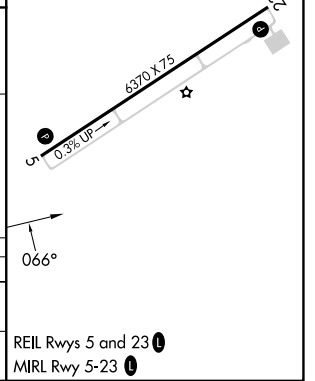


VGSI and descent angles not coincident (VGSI Angle 2.75/TCH 39).

CASPI	WIBTI	SHOTE	KARST	ELEDE
8000	8000	6620	5860	
6 NM	3.7 NM	2 NM	1.8 NM	0.7 NM
095°	066°			
	3.54° TCH 50			

8200	OWEVU	tr	RLY
↑	✦	035°	◻

CATEGORY	A	B	C	D
LNNAV MDA	5240-1 358 (400-1)			NA
CIRCLING	5320-1 428 (500-1)	5540-1 648 (700-1)	5580-2 688 (700-2)	5880-3 988 (1000-2)



NW-1, 16 APR 2026 to 14 MAY 2026

NW-1, 16 APR 2026 to 14 MAY 2026