

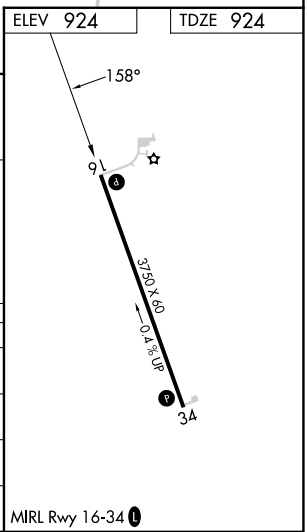
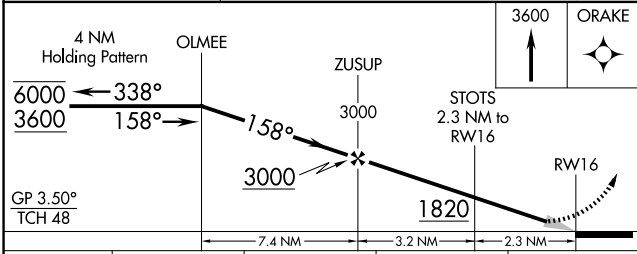
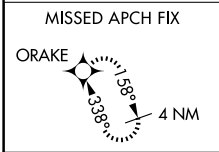
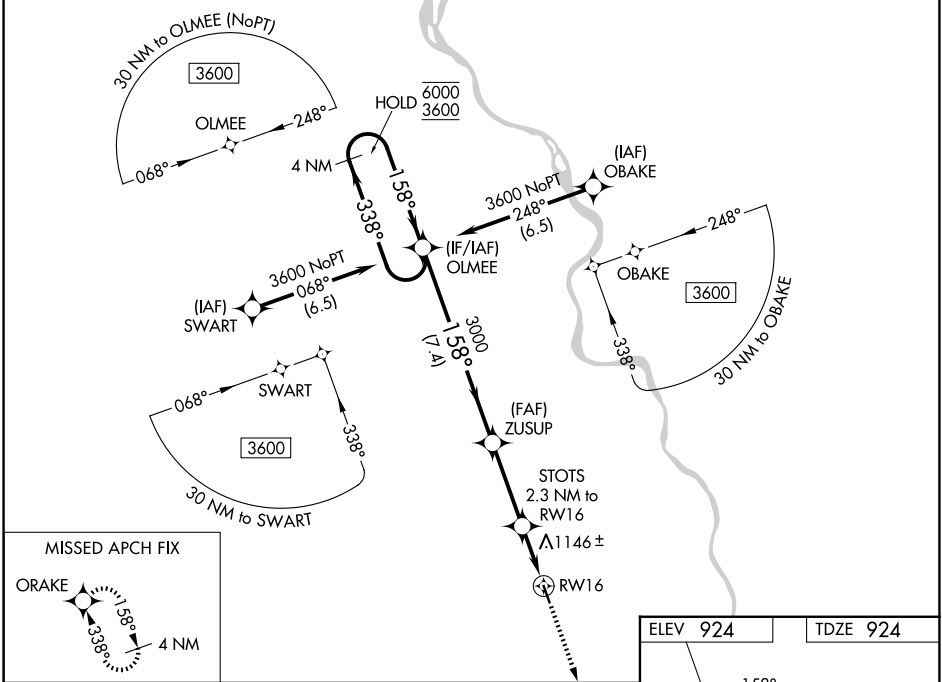
WAAS CH <b>49142</b> <b>W16A</b>	APP CRS <b>158°</b>	Rwy Ldg <b>3750</b> TDZE <b>924</b> Apt Elev <b>924</b>
--	------------------------	---

# RNAV (GPS) RWY 16

FARINGTON FLD (K01)

RNP APCH - GPS.	MISSED APPROACH: Climb to 3600 direct ORAKE and hold.
<p>▼ Circling NA for Cat C west of Rwy 16-34.</p> <p>▲ NA Baro-VNAV NA.</p> <p>Use FNB altimeter setting.</p>	

FNB ASOS <b>119.275</b>	MINNEAPOLIS CENTER <b>128.75 346.3</b>	CTAF <b>122.9</b>
----------------------------	---	----------------------



CATEGORY	A	B	C	D
LPV DA	1180-1	256 (300-1)	1250-1 326 (400-1)	NA
LNAV/VNAV DA	1480-1½ 556 (600-1½)			NA
LNAV MDA	1480-1	556 (600-1)	1480-1½ 556 (600-1½)	NA
CIRCLING	1500-1 576 (600-1)	1540-1 616 (700-1)	1580-1¾ 656 (700-1¾)	NA

NC-2, 16 APR 2026 to 14 MAY 2026

NC-2, 16 APR 2026 to 14 MAY 2026