

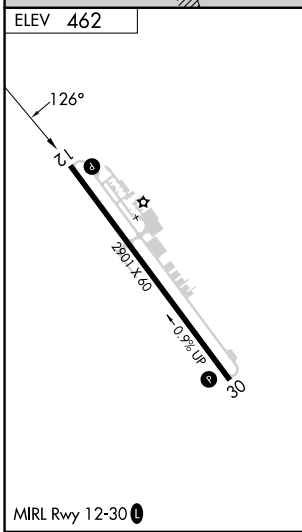
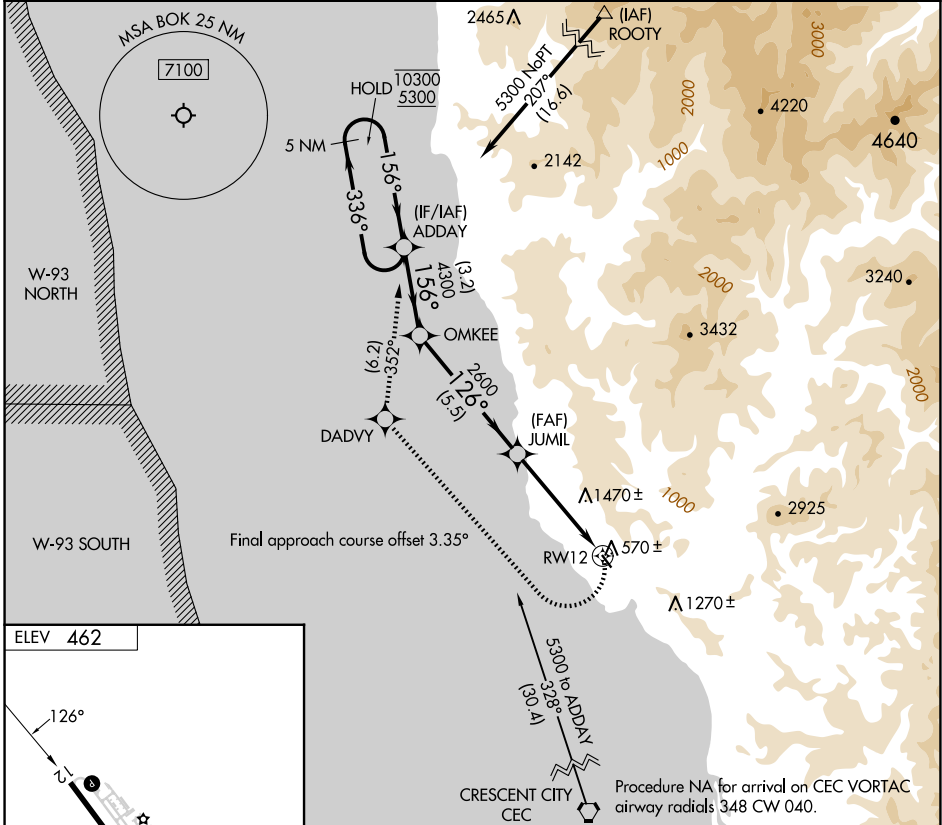
APP CRS 126°	Rwy Ldg TDZE Apt Elev	N/A N/A 462
------------------------	-----------------------------	--

RNAV (GPS)-A

BROOKINGS (BOK)

RNP APCH - GPS.	MISSED APPROACH: Climbing right turn to 5300 direct DADVY, and on track 352° to ADDAY and hold, continue climb in hold to 5300.
<p>Procedure NA at night. Circling NA northeast of Rwy 12-30. Rwy 12 and 30 helicopter visibility reduction below 1 SM NA.</p>	

AWOS-3PT 132.025	SEATTLE CENTER 124.85 306.3	UNICOM 122.8 (CTAF)
----------------------------	---------------------------------------	-------------------------------



	5 NM Holding Pattern	ADDAY	OMKEE	JUMIL	RW12
	10300 5300	4300	4300	2600	
	← 336°	→ 156°	→ 126°	→ 4.15° TCH 40	
		3.2 NM	5.5 NM	4.8 NM	
CATEGORY	A	B	C	D	
CIRCLING	1600-1¼ 1138 (1200-1¼)	1600-1½ 1138 (1200-1½)	NA		

NW-1, 16 APR 2026 to 14 MAY 2026

NW-1, 16 APR 2026 to 14 MAY 2026