

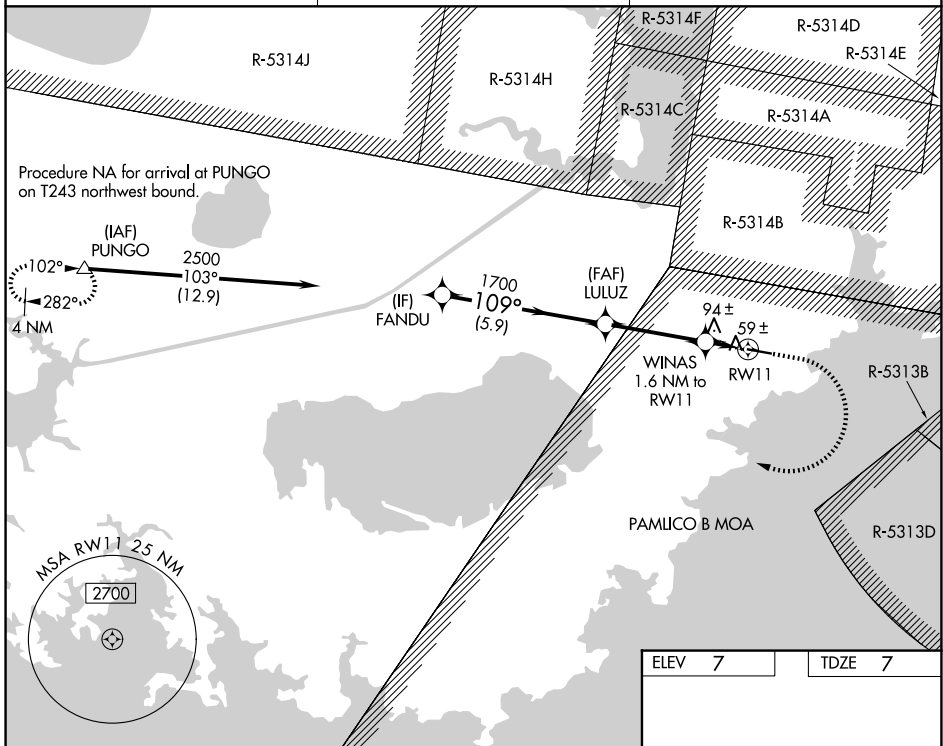
WAAS CH <b>40442</b> <b>W11A</b>	APP CRS <b>109°</b>	Rwy Ldg TDZE Apt Elev	<b>5002</b> <b>7</b> <b>7</b>
--	------------------------	-----------------------------	-------------------------------------

# RNAV (GPS) RWY 11

HYDE COUNTY (7W6)

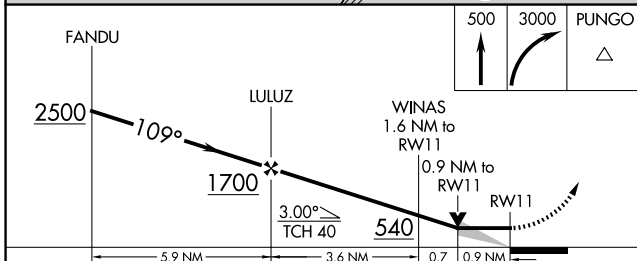
RNP APCH - GPS.	MISSED APPROACH: Climb to 500 then climbing right turn 3000 direct PUNGO and hold.
<b>⚠</b> VDP NA when using HSE altimeter setting. When local altimeter setting not received, use HSE altimeter setting and increase all MDAs 80 feet.	

AWOS-3P <b>119.275</b>	CHERRY POINT APP CON <b>119.75 360.775</b>	UNICOM <b>122.7 (CTAF)</b> <b>Ⓛ</b>
---------------------------	---	--



SE-2, 16 APR 2026 to 14 MAY 2026

SE-2, 16 APR 2026 to 14 MAY 2026



ELEV 7	TDZE 7
--------	--------

CATEGORY	A	B	C	D
LP MDA	320-1	313 (400-1)		NA
LNAV MDA	360-1	353 (400-1)		NA
CIRCLING	420-1 413 (500-1)	460-1 453 (500-1)		NA

