

QUINTER, KANSAS

AL-11599 (FAA)

25219

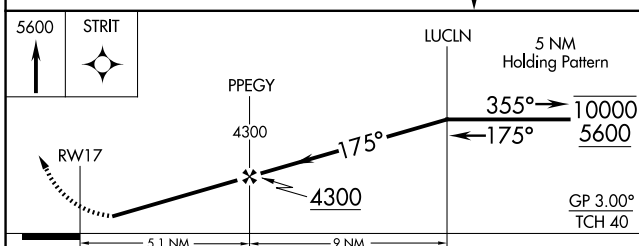
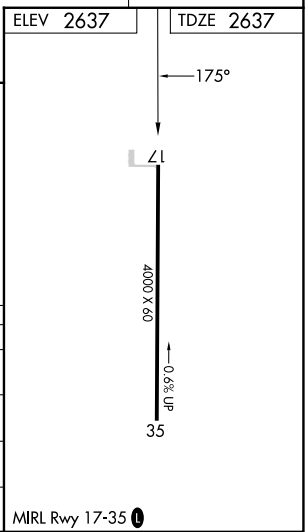
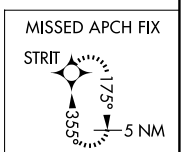
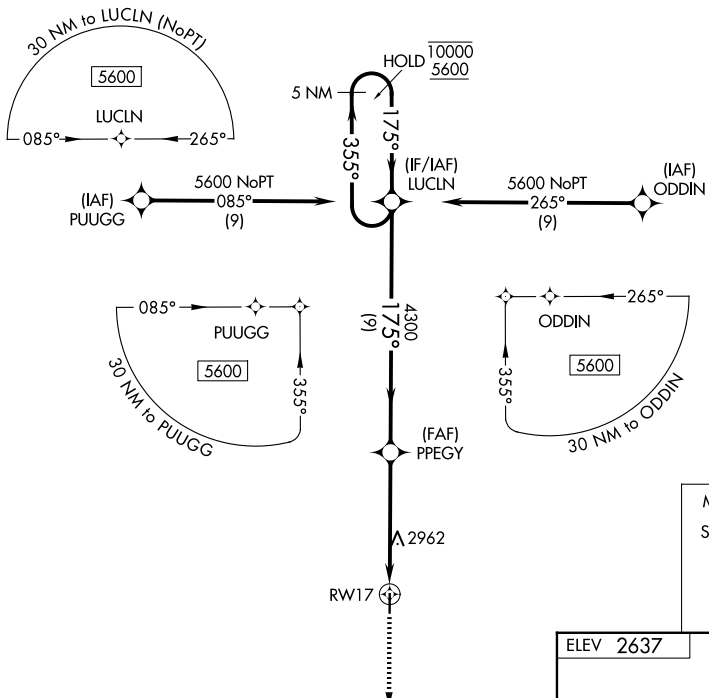
WAAS CH 81944 W17A	APP CRS 175°	Rwy Ldg 4000 TDZE 2637 Apt Elev 2637
--	------------------------	---

RNAV (GPS) RWY 17

GOVE COUNTY (1QK)

RNP APCH-GPS.	MISSED APPROACH: Climb to 5600 direct STRIT and hold.
<p>▼ Rwy 17 helicopter visibility reduction below 3/4 SM NA.</p> <p>▲ NA Baro-VNAV NA. Use Hill City altimeter setting.</p>	

HLC ASOS 118.425	DENVER CENTER 132.7 226.675	CTAF 122.90
----------------------------	---------------------------------------	-----------------------



CATEGORY	A	B	C	D
LPV DA	3007-1	370 (400-1)		NA
LNAV/VNAV DA	3430-2½	793 (800-2½)		NA
LNAV MDA	3340-1	703 (800-1)		NA
CIRCLING	3340-1 703 (800-1)	3400-1 763 (800-1)		NA

MIRL Rwy 17-35 0

QUINTER, KANSAS
Orig 24MAR22

39°02'N-100°14'W

RNAV (GPS) RWY 17

GOVE COUNTY (1QK)

NC-2, 16 APR 2026 to 14 MAY 2026

NC-2, 16 APR 2026 to 14 MAY 2026