

COPTER RNAV (GPS) 037°

APCH CRS	Rwy Idg	50
037°	TDZE	1707
	Arprt Elev	1707

[USN]

BLUEGRASS (9VA5)

RNP APCH-GPS

▼ Obtain local altimeter on Bluegrass Advsy, when not rcvd use DULLES Intl altimeter. FEMA SPECIAL FACILITY (Bluegrass) normal opr 0745-1630L Mon-Fri. Phone 540-542-3014 for PPR.

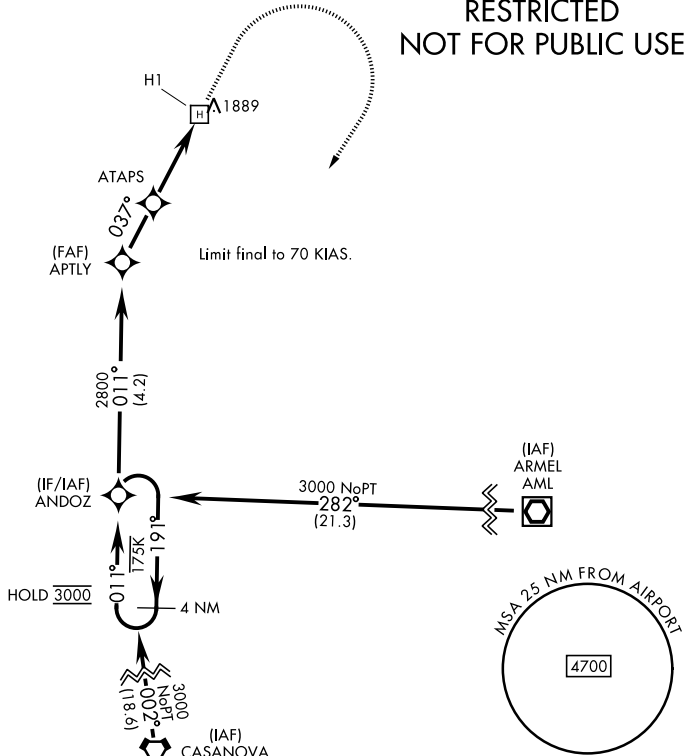
MISSED APPROACH: Climb to 2700 then climbing right turn to 3000 direct ANDOZ and hold.

POTOMAC APP CON
120.45 306.925

BLUEGRASS ADVISORY ★
126.2 241.0

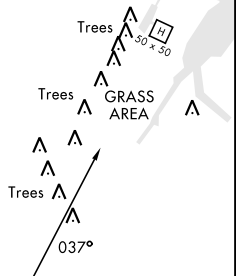
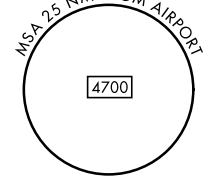
Visibility reduction by Helicopters not authorized.

RESTRICTED NOT FOR PUBLIC USE



EMERG SAFE ALT 100 NM 6100

4 NM Holding Pattern ANDOZ	2700	3000	ANDOZ	ELEV	1707	TDZE	1707
CATEGORY	COPTER						
LNAV MDA	2220-1	513	(600-1)				
WASHINGTON DULLES INTL ALTIMETER SETTING							
LNAV MDA	2480-1	773	(800-1)				



COPTER RNAV (GPS) 037°

NE-3, 16 APR 2026 to 14 MAY 2026

NE-3, 16 APR 2026 to 14 MAY 2026