

COPTER VOR/DME or TACAN 056°

| | | |
|--|-------------------------|--|
| VORTAC LDN 114.3 Chan 90 | APCH CRS 056° | Rwy Idg TDZE Arprt Elev 50 1707 1707 |
|--|-------------------------|--|

[USN]

BLUEGRASS (9VA5)

▼ Circling not authorized.
Visibility reduction by helicopter NA.

MISSED APPROACH: Climb to 4000, then right turn to intercept LDN VORTAC R-056 to WLCAT and hold.

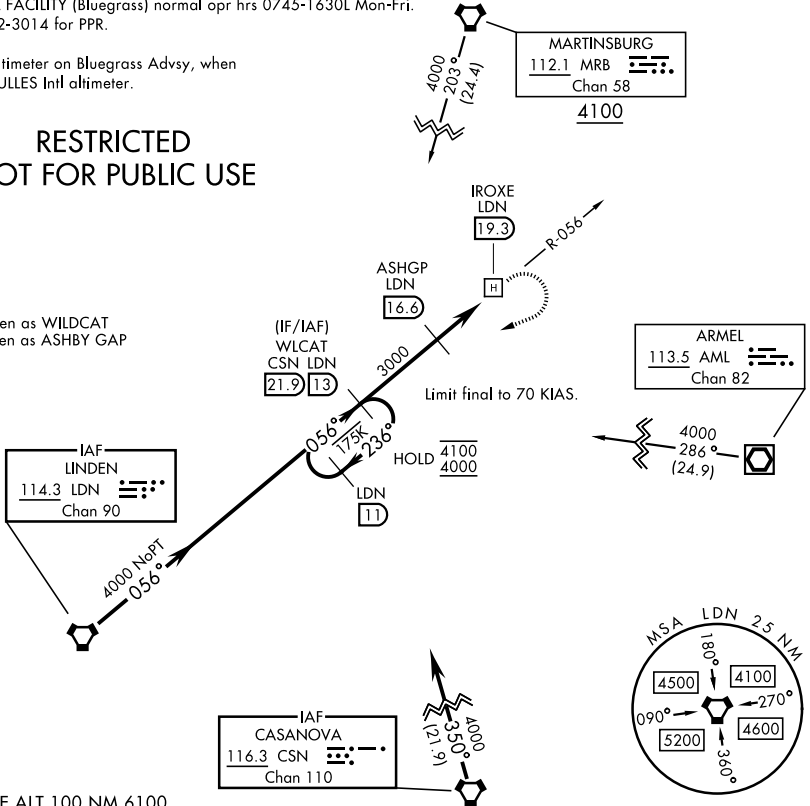
| | |
|--|--|
| POTOMAC APP CON 120.45 306.925 | BLUEGRASS ADVISORY ★ 126.2 241.0 |
|--|--|

FEMA SPECIAL FACILITY (Bluegrass) normal opr hrs 0745-1630L Mon-Fri.
Phone 540-542-3014 for PPR.

Obtain local altimeter on Bluegrass Advtsy, when not rcvd use DULLES Intl altimeter.

RESTRICTED NOT FOR PUBLIC USE

WLCAT - spoken as WILDCAT
ASHGP - spoken as ASHBY GAP



NE-3, 16 APR 2026 to 14 MAY 2026

NE-3, 16 APR 2026 to 14 MAY 2026

EMERG SAFE ALT 100 NM 6100

| | | | | | |
|--|--------------|------|--------------|-----------|-----------|
| <table border="1"> <tr> <td>4000</td> <td>WLCAT LDN 13</td> </tr> </table> | | 4000 | WLCAT LDN 13 | ELEV 1707 | TDZE 1707 |
| 4000 | WLCAT LDN 13 | | | | |
| | | | | | |
| CATEGORY | COPTER | | | | |
| H-056 | 2460-1 | 753 | (800-1) | | |
| WASHINGTON DULLES INTL ALTIMETER SETTING | | | | | |
| H-056 | 2720-1¼ | 1013 | (1100-1¼) | | |

COPTER VOR/DME or TACAN 056°