

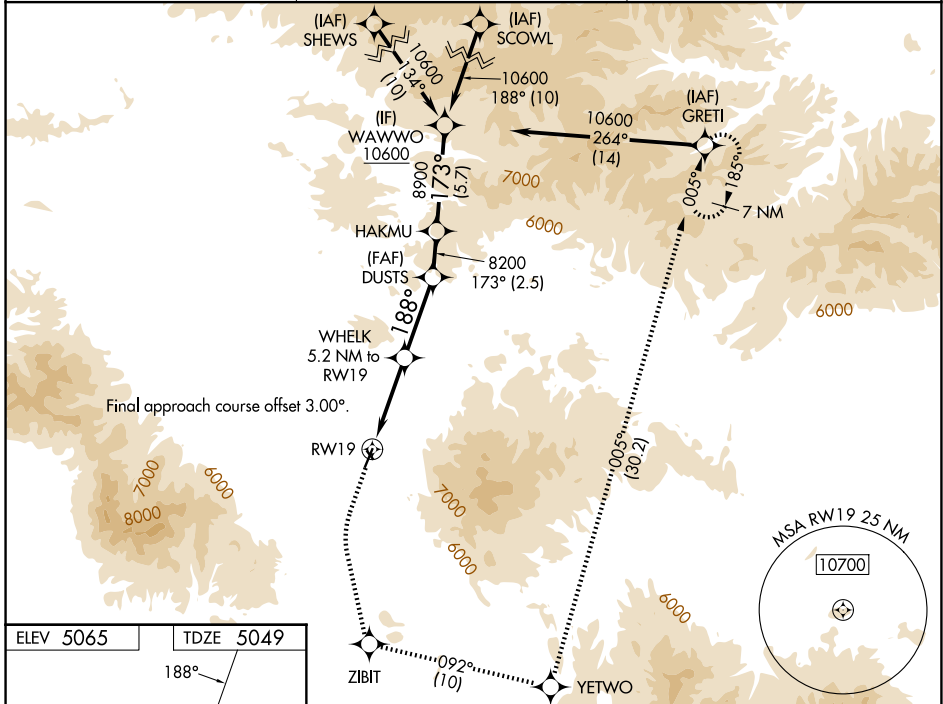
WAAS CH 65648 W19A	APP CRS 188°	Rwy Ldg TDZE Apt Elev	6100 5049 5065
--	------------------------	-----------------------------	---

RNAV (GPS) RWY 19

WHITE SULPHUR SPRINGS (7S6)

RNP APCH - GPS.	MISSED APPROACH: Climb to 5700 then climbing left turn to 12000 direct ZIBIT then on track 092° to YETWO then on track 005° to GRETI and hold.
<p>⚠ For uncompensated Baro-VNAV systems, LNAV/VNAV NA below -25°C or above 54°C. Rwy 19 helicopter visibility reduction below 3/4 SM NA. Circling NA to Rwys 13 and 31. Circling NA for Cats C and D east of Rwy 1-19. Circling NA for all Cats east of Rwy 1-19 at night.</p>	

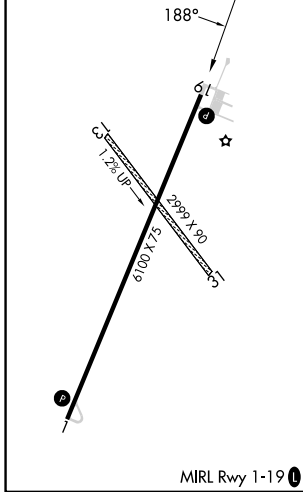
AWOS-3PT 118.525	SALT LAKE CENTER 133.4 285.4	CTAF 122.9
----------------------------	--	----------------------



NW-1, 16 APR 2026 to 14 MAY 2026

NW-1, 16 APR 2026 to 14 MAY 2026

ELEV 5065	TDZE 5049
-----------	-----------



5700	12000	ZIBIT	tr 092°	YETWO	tr 005°	GRETI	HAKMU	WAWWO
		WHELK 5.2 NM to RW19	DUSTS 8200					10600
		2.5 NM to RW19	188°	8200	8900			GP 3.00° TCH 35
		2.5 NM	2.7 NM	4.6 NM	2.5 NM	5.7 NM		
CATEGORY	A	B	C	D				
LPV DA	5299-1		250 (300-1)					
LNAV/VNAV DA	5706-1 7/8		657 (700-1 7/8)					
LNAV MDA	5880-1 831 (900-1)	5880-1 1/4 831 (900-1 1/4)	5880-2 1/2	831 (900-2 1/2)				
CIRCLING	5880-1 1/4 815 (900-1 1/4)	5920-1 1/4 855 (900-1 1/4)	5920-2 1/2	855 (900-2 1/2)		5920-2 3/4 855 (900-2 3/4)		