

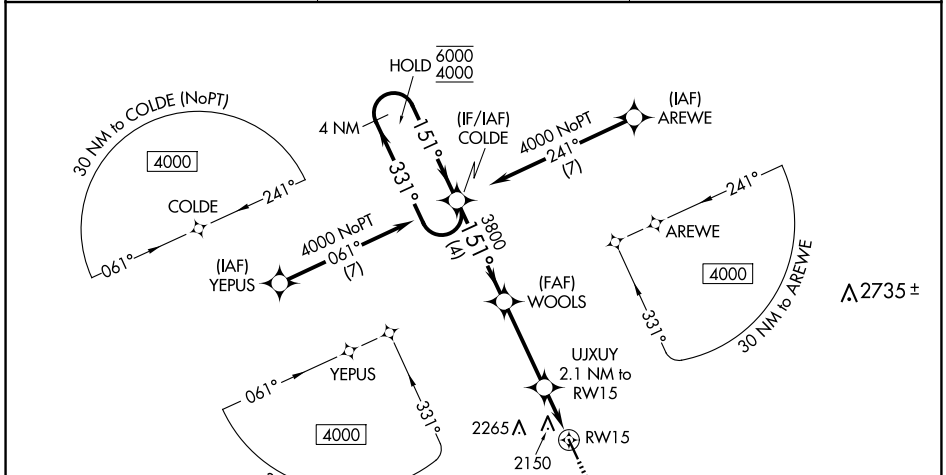
|  |                        |   |
|--|------------------------|---|
| WAAS<br>CH <b>58047</b><br><b>W15A</b> | APP CRS<br><b>151°</b> | Rwy Ldg<br>TDZE <b>2030</b><br>Apt Elev <b>2034</b> |
|--|------------------------|---|

# RNAV (GPS) RWY 15

ASHLEY MUNI (ASY)

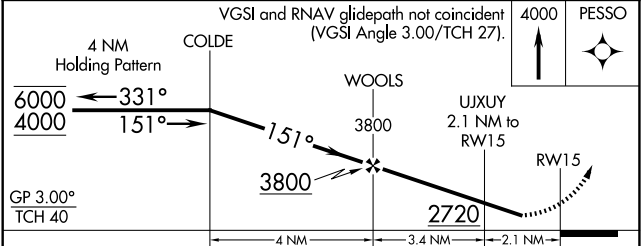
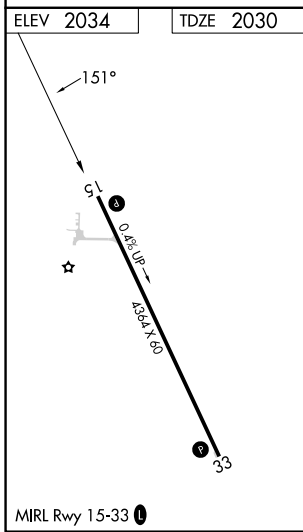
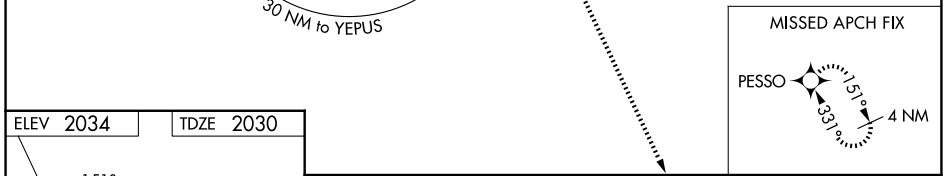
|   |   |
|---|---|
| RNP APCH - GPS.   | MISSED APPROACH: Climb to 4000 direct PESSO and hold. |
| ▽ Baro-VNAV NA. Rwy 15 helicopter visibility reduction below 3/4 SM NA.<br>▲ NA Use 7L2 altimeter setting; when not received, use MBG altimeter setting and increase LPV DA to 2448 feet and all visibilities 1/8 SM. Increase LNAV/VNAV DA to 2477 feet and all visibilities 1/4 SM. Increase all MDAs 40 feet and LNAV visibility Cat C/D 1/4 SM, and Circling visibility Cat C 1/4 SM. |   |

|                              |   |                      |
|------------------------------|---|----------------------|
| 7L2 AWOS-3<br><b>118.175</b> | MINNEAPOLIS CENTER<br><b>135.25 256.7</b> | CTAF<br><b>122.9</b> |
|------------------------------|---|----------------------|



NC-1, 16 APR 2026 to 14 MAY 2026

NC-1, 16 APR 2026 to 14 MAY 2026



| CATEGORY     | A                          | B                     | C                             | D                             |
|--------------|----------------------------|-----------------------|-------------------------------|-------------------------------|
| LPV DA       | 2408-1 378 (400-1)         |                       |                               |                               |
| LNAV/VNAV DA | 2437-1 1/8 407 (500-1 1/8) |                       |                               |                               |
| LNAV MDA     | 2540-1 510 (600-1)         |                       | 2540-1 3/8 510 (600-1 3/8)    |                               |
| CIRCLING     | 2600-1<br>566 (600-1)      | 2700-1<br>666 (700-1) | 2700-1 3/4<br>666 (700-1 3/4) | 2800-2 1/2<br>766 (800-2 1/2) |