

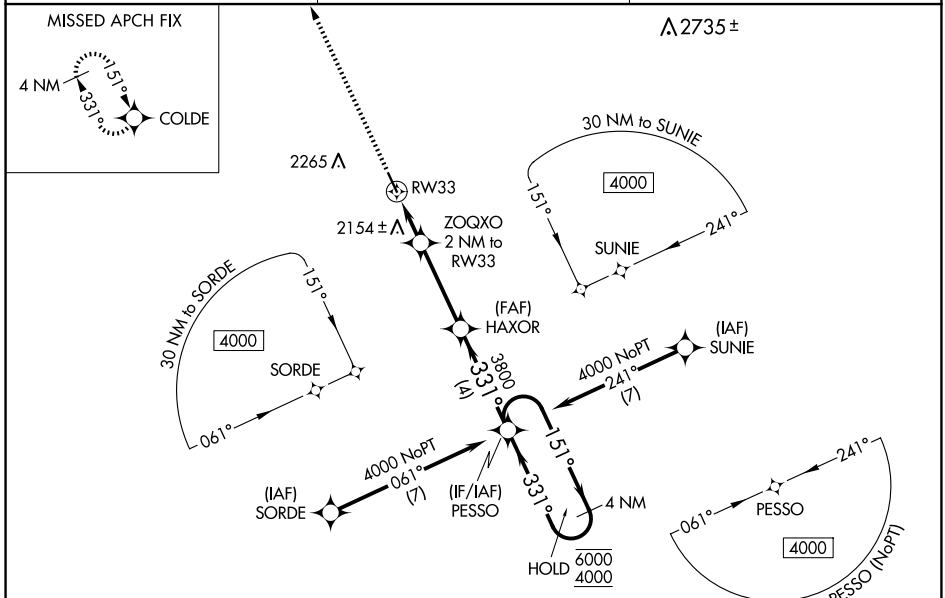
| | | |
|--|------------------------|---|
| WAAS CH 62947 W33A | APP CRS 331° | Rwy Ldg 4364 TDZE 2034 Apt Elev 2034 |
|--|------------------------|---|

RNAV (GPS) RWY 33

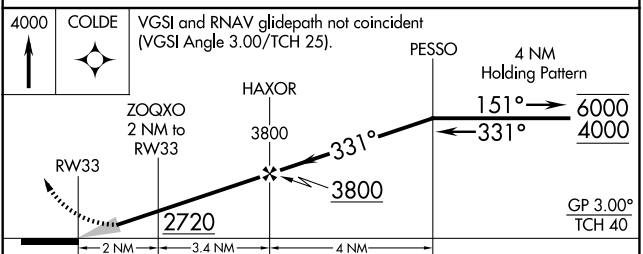
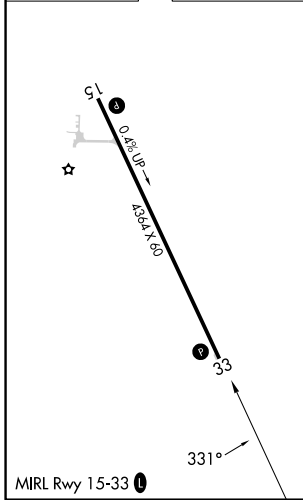
ASHLEY MUNI (ASY)

| | |
|---|--|
| RNP APCH - GPS. | <p>⚠ Baro-VNAV NA. Use 7L2 altimeter setting; when not received, use MBG altimeter setting and increase LPV DA to 2400 feet; increase LNAV/VNAV DA to 2450 feet and all visibilities $\frac{1}{8}$ SM. Increase all MDAs 40 feet and LNAV visibility Cat C/D $\frac{1}{4}$ SM, and Circling visibility Cat C $\frac{1}{4}$ SM.</p> |
| MISSED APPROACH: Climb to 4000 direct COLDE and hold. | |

| | | |
|------------------------------|---|----------------------|
| 7L2 AWOS-3 118.175 | MINNEAPOLIS CENTER 135.25 256.7 | CTAF 122.9 |
|------------------------------|---|----------------------|



| | |
|-----------|-----------|
| ELEV 2034 | TDZE 2034 |
|-----------|-----------|



| CATEGORY | A | B | C | D |
|--------------|-----------------------|-----------------------|--|--|
| LPV DA | 2360-1 | | 326 (400-1) | |
| LNAV/VNAV DA | 2410-1 | | 376 (400-1) | |
| LNAV MDA | 2540-1 506 (600-1) | | 2540-1 $\frac{3}{8}$ 506 (600-1 $\frac{3}{8}$) | |
| CIRCLING | 2600-1 566 (600-1) | 2700-1 666 (700-1) | 2700-1 $\frac{3}{4}$ 666 (700-1 $\frac{3}{4}$) | 2800-2 $\frac{1}{2}$ 766 (800-2 $\frac{1}{2}$) |

NC-1, 16 APR 2026 to 14 MAY 2026

NC-1, 16 APR 2026 to 14 MAY 2026