

RNAV (GPS) RWY 7

LAJITAS INTL (T89)

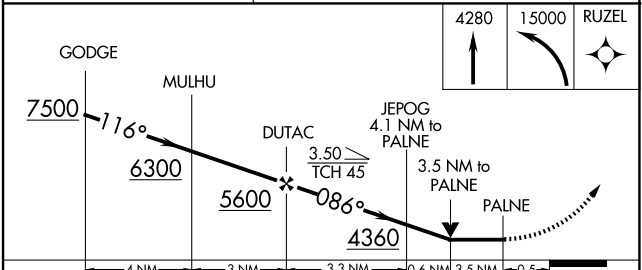
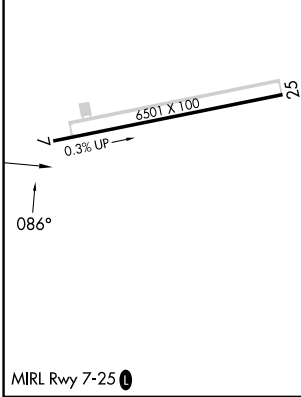
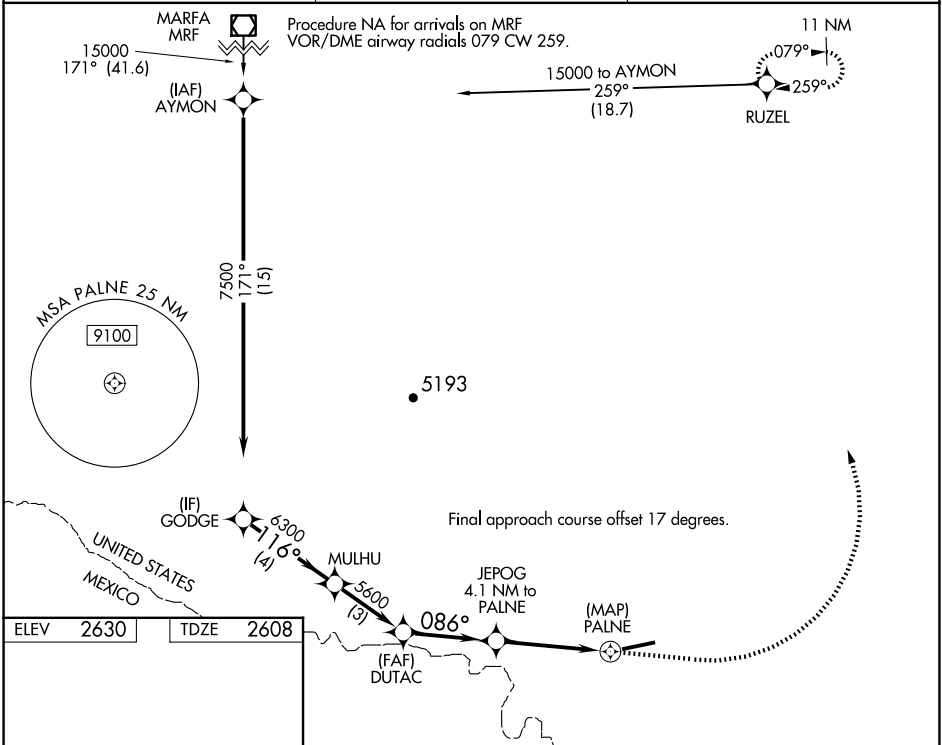
APP CRS	Rwy Idg	6501
086°	TDZE	2608
	Apt Elev	2630

RNP APCH - GPS.

▼ Rwy 7 helicopter visibility reduction below 3/4 SM NA. When local altimeter setting not received, use Presidio Lely Intl altimeter setting and increase all MDA 140 feet. VDP NA when using Presidio Lely Intl altimeter setting. Circling NA south of Rwy 7-25.

MISSED APPROACH: Climb to 4280 then climbing left turn to 15000 direct RUZEL and hold, continue climb in hold to 15000.

AWOS-3 119.275	ALBUQUERQUE CENTER 135.875 292.15	UNICOM 122.7 (CTAF) 0
--------------------------	---	---------------------------------



CATEGORY	A	B	C	D
LNAV	4140-1 1/4 1532 (1600-1 1/4)	4140-1 1/2 1532 (1600-1 1/2)	4140-3	1532 (1600-3)
CIRCLING	4140-1 1/4 1510 (1600-1 1/4)	4140-1 1/2 1510 (1600-1 1/2)	4140-3 1510 (1600-3)	4180-3 1550 (1600-3)

SC-3, 16 APR 2026 to 14 MAY 2026

SC-3, 16 APR 2026 to 14 MAY 2026