

WAAS CH 72456 W25B	APP CRS 249°	Rwy Idg TDZE Apt Elev	6501 2628 2630
----------------------------------------	------------------------	-----------------------------	-------------------------------------------

RNAV (GPS) Y RWY 25

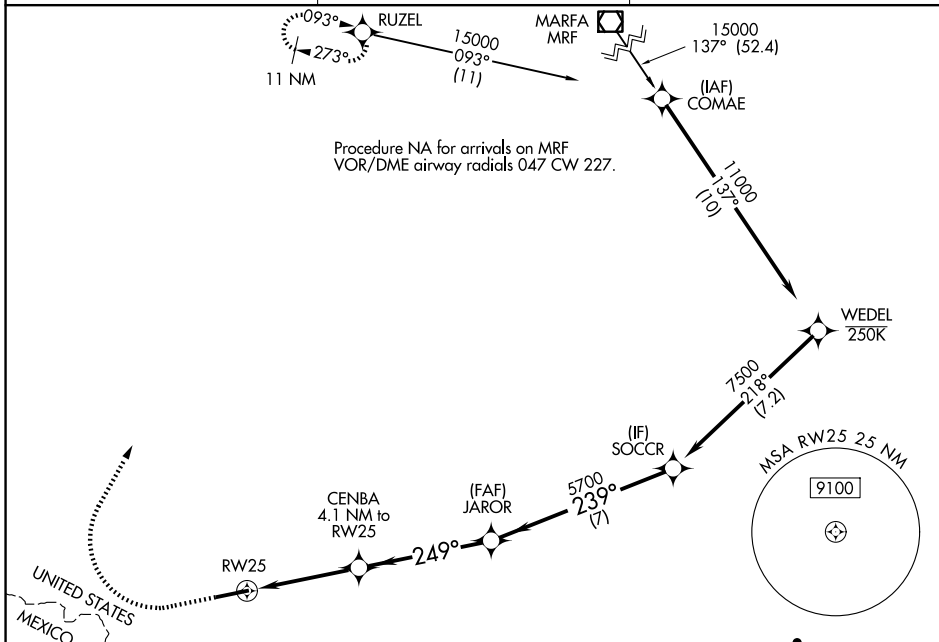
LAJITAS INTL (T89)

RNP APCH - GPS.

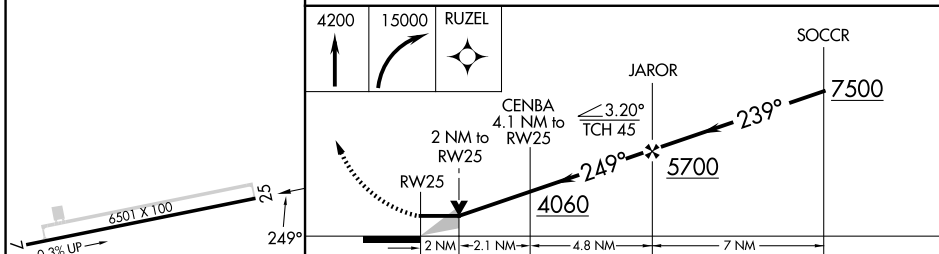
MISSED APPROACH: Climb to 4200 then climbing right turn to 15000 direct RUZEL and hold, continue climb-in-hold to 15000.
*MISSED APPROACH requires minimum climb of 237 feet per NM to 5800.

⚠ Circling NA south of Rwy 7-25. When local altimeter setting not received, procedure NA.

AWOS-3 119.275	ALBUQUERQUE CENTER 135.875 292.15	UNICOM 122.7 (CTAF) 0
--------------------------	---------------------------------------------	----------------------------------------



ELEV 2630	TDZE 2628
-----------	-----------



CATEGORY	A	B	C	D
*LP MDA	3340-1 712 (800-1)		3340-2 712 (800-2)	
*LNAV MDA	3420-1 792 (800-1) 3760-1¼ 792 (800-1¼)	3420-1¼ 792 (800-1¼) 3760-1½ 792 (800-1½)	3420-2½ 792 (800-2½)	
LP MDA	1132 (1200-1¼)	1132 (1200-1½)	3760-3 1132 (1200-3)	
LNAV MDA	4020-1¼ 1392 (1400-1¼)	4020-1½ 1392 (1400-1½)	4020-3 1392 (1400-3)	
CIRCLING	4020-1¼ 1390 (1400-1¼)	4020-1½ 1390 (1400-1½)	4020-3 1390 (1400-3)	4180-3 1550 (1600-3)

MIRL Rwy 7-25 **0**

RNAV (GPS) Y RWY 25

LAJITAS INTL (T89)

SC-3, 16 APR 2026 to 14 MAY 2026

SC-3, 16 APR 2026 to 14 MAY 2026