

WAAS CH <b>71055</b> <b>W25A</b>	APP CRS <b>249°</b>	Rwy Idg TDZE Apt Elev	<b>6501</b> <b>2628</b> <b>2630</b>
--	------------------------	-----------------------------	---

# RNAV (GPS) Z RWY 25

LAJITAS INTL (T89)

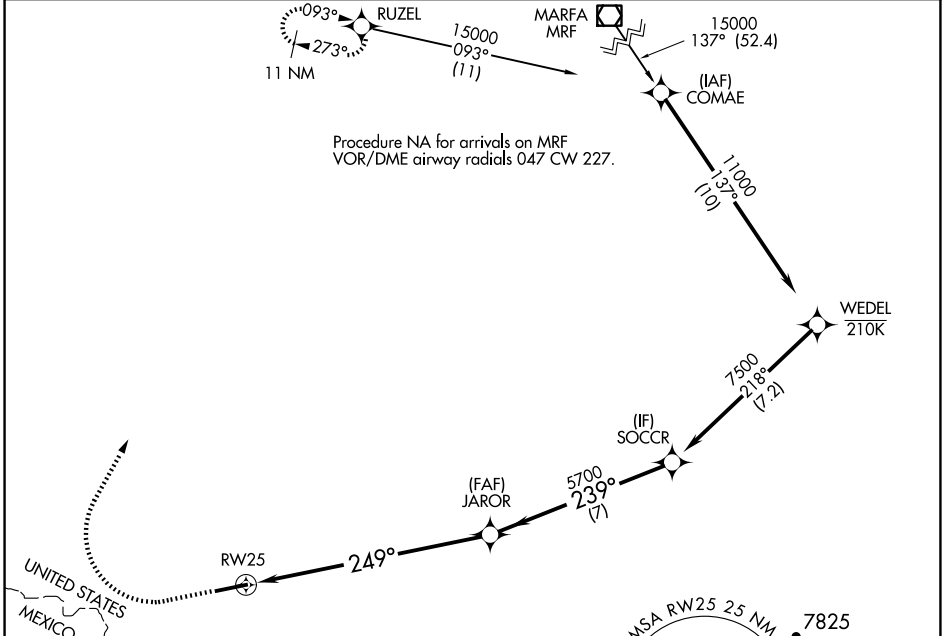
RNP APCH - GPS.

▼ For uncompensated Baro-VNAV systems, LNAV/VNAV NA below -20°C or above 54°C. When local altimeter setting not received, procedure NA.

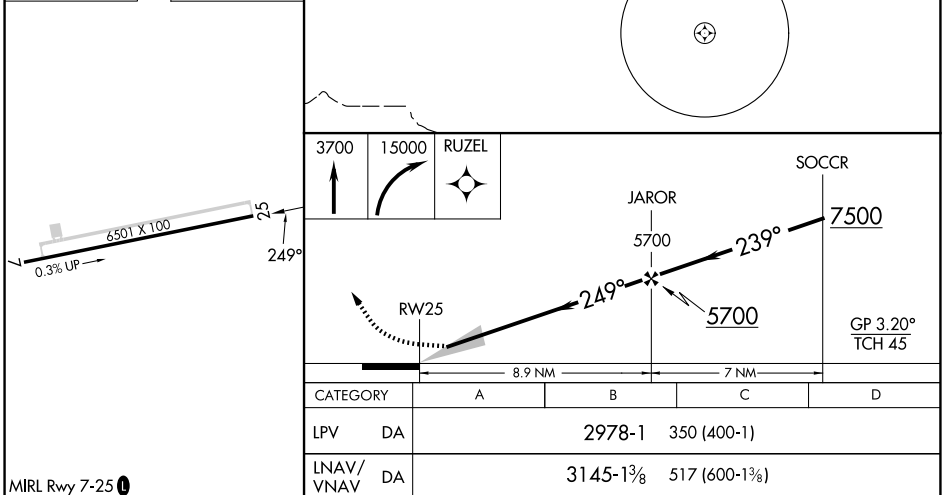
MISSED APPROACH: Climb to 3700 then climbing right turn to 15000 direct RUZEL and hold, continue climb-in-hold to 15000.

MISSED APPROACH requires minimum climb of 383 feet per NM to 5060, if unable to meet climb gradient, see RNAV (GPS) Y RWY 25.

AWOS-3 <b>119.275</b>	ALBUQUERQUE CENTER <b>135.875 292.15</b>	UNICOM <b>122.7 (CTAF) ①</b>
--------------------------	---	---------------------------------



ELEV 2630	TDZE 2628
-----------	-----------



CATEGORY	A	B	C	D
LPV DA	2978-1		350 (400-1)	
LNAV/VNAV DA	3145-1 $\frac{3}{8}$		517 (600-1 $\frac{3}{8}$ )	

MIRL Rwy 7-25 ①

LAJITAS, TEXAS  
Orig 26DEC24

29°17'N-103°41'W

# RNAV (GPS) Z RWY 25

LAJITAS INTL (T89)

SC-3, 16 APR 2026 to 14 MAY 2026

SC-3, 16 APR 2026 to 14 MAY 2026