

COPTER RNAV (GPS) 060°

APCH CRS 060°	Rwy ldg TDZE Arprt Elev	N/A N/A 400
-------------------------	-------------------------------	--------------------------

[USA]

SHELL AHP (FORT RUCKER) (KSXS)

RNP APCH-GPS
 ▼ Circling not authorized.
 Visibility reduction below ¾ mile not authorized.
 For Baro-VNAV systems, LNAV/VNAV not authorized below -15°C or above 54°C.

MISSED APPROACH: Climb to 1000 then climbing left turn to 2000 direct PNDLT and hold.

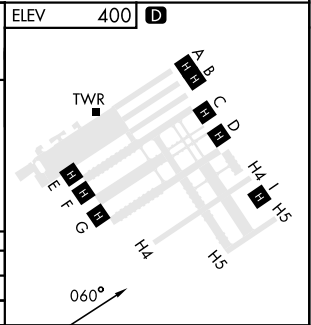
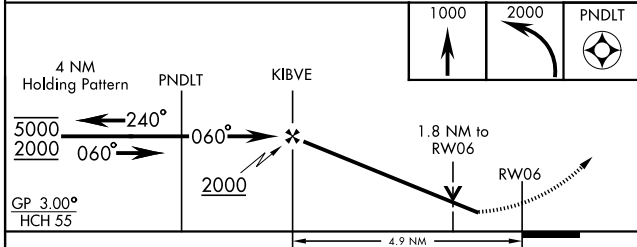
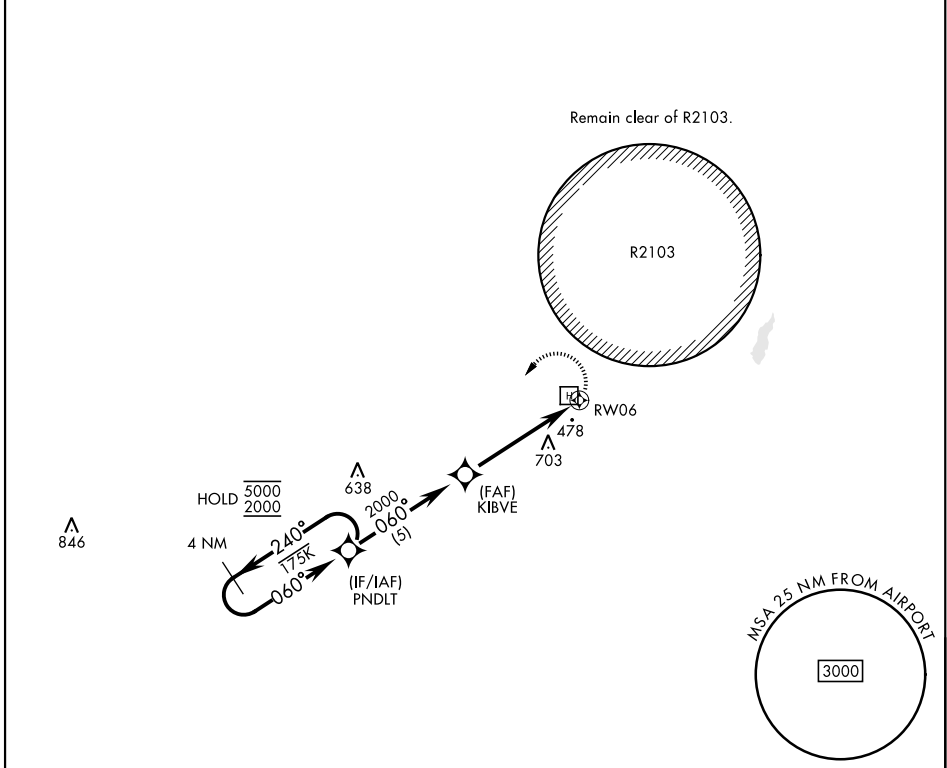
ATIS
376.5

CAIRNS APP CON
133.45 239.4

TOWER ★
139.123 (CTAF)
244.5 (CTAF)

GND CON
142.425 310.6

Final approach course offset 39.99°



CATEGORY	COPTER		
LNAV/VNAV DA	1000-1¾	600	(600-1¾)
LNAV MDA	1000-1	600	(600-1)

COPTER RNAV (GPS) 060°

SE-4, 16 APR 2026 to 14 MAY 2026

SE-4, 16 APR 2026 to 14 MAY 2026