

FORT RUCKER, ALABAMA

COPTER RNAV (GPS) 100°

APCH CRS 100°	Rwy Idg TDZE Arpt Elev N/A N/A 400
-------------------------	--

[USA]

SHELL AHP (FORT RUCKER) (KSXS)

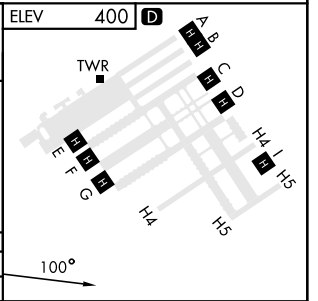
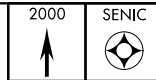
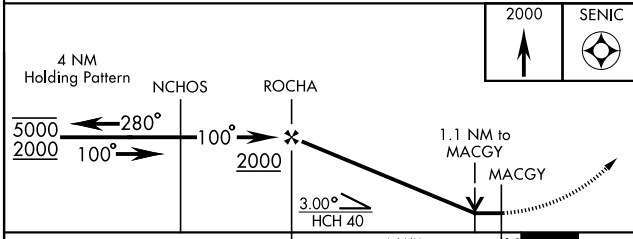
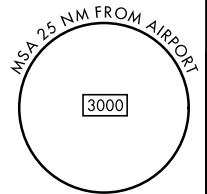
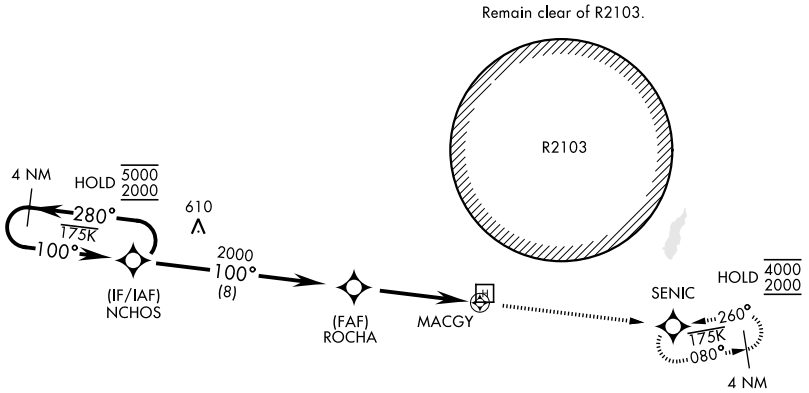
RNP APCH-GPS

▼ Circling not authorized.
 Visibility reduction below 3/4 mile not authorized.
 For Baro-VNAV systems, LNAV/VNAV NA below -15°C
 or above 54°C.

MISSED APPROACH: Climb to 2000 direct SENIC and hold.

ATIS 376.5	CAIRNS APP CON 133.45 239.4	TOWER★ 139.123 (CTAF) 244.5 (CTAF)	GND CON 142.425 310.6
----------------------	---------------------------------------	--	---------------------------------

Final approach course offset 39.99°



CATEGORY	COPTER		
LNAV MDA	900-1	500	(500-1)

FORT RUCKER, ALABAMA

31° 22'N - 85° 51'E

SHELL AHP (FORT RUCKER) (KSXS)

Orig 16APR26

COPTER RNAV (GPS) 100°

SE-4, 16 APR 2026 to 14 MAY 2026

SE-4, 16 APR 2026 to 14 MAY 2026